

\_\_\_\_\_ NEW WIRE  
 \_\_\_\_\_ EXISTING WIRE  
 - - - - - AIRFRAME  
 - - - - - UNIT

REV	DESCRIPTION	DATE
A	INITIAL RELEASE	15-06-2021
B	ADDED DETAILED EQUIPMENT LOCATION	22-10-2021
C	ADDED CONFIGURATION -013	27-01-2023
D	ADDED CONFIGURATION -015	16-02-2024
E	UPDATED -013 & -015 CONFIGURATION TO CHANGE GMU 44 TO GMU 44B AND CORRECTED ANTENNA LABELS	17-08-2024

NOTES:

- ROUTE ALL WIRES AND CABLES WITH EXISTING WIRE ROUTES WHERE POSSIBLE AND CLAMP IN ACCORDANCE WITH THE LATEST REVISION OF BHT-ELEC-SPM CHAPTER 6.
- IT IS PERMISSIBLE TO INCREASE/DECREASE EXISTING CLAMP SIZE FOR A SNUG FIT IF REQUIRED.
- WIRES MUST BE ROUTED ABOVE COMBUSTIBLE FLUID OR OXYGEN LINE AND EQUIPMENT WITH A MINIMUM OF 6 INCHES OF SEPARATION (MIN 2 INCHES IF WIRES IS CONDUIT).
- IT IS PERMISSIBLE TO MAKE MINOR DEVIATION IN HARNESS ROUTING TO ACCOMMODATE FOR VARIATIONS IN AIRCRAFT.
- ALL LOCATIONS ARE APPROXIMATE. FOR A DETAILED INSTALLATION INFORMATION SEE REFERENCE ICA-D212-725 AND BHT-212-MM.

-015 QTY	-013 QTY	-011 QTY	ITEM	PART NUMBER	DESCRIPTION	REMARKS
				-015	WIRE ROUTING, AVIONICS UPGRADE	W/O DME., W/ SXM
				-013	WIRE ROUTING, AVIONICS UPGRADE	DUAL GTN 750, W/O DME, W/SXM
				-011	WIRE ROUTING, AVIONICS UPGRADE	W/DME , W/O SXM

BILL OF MATERIALS

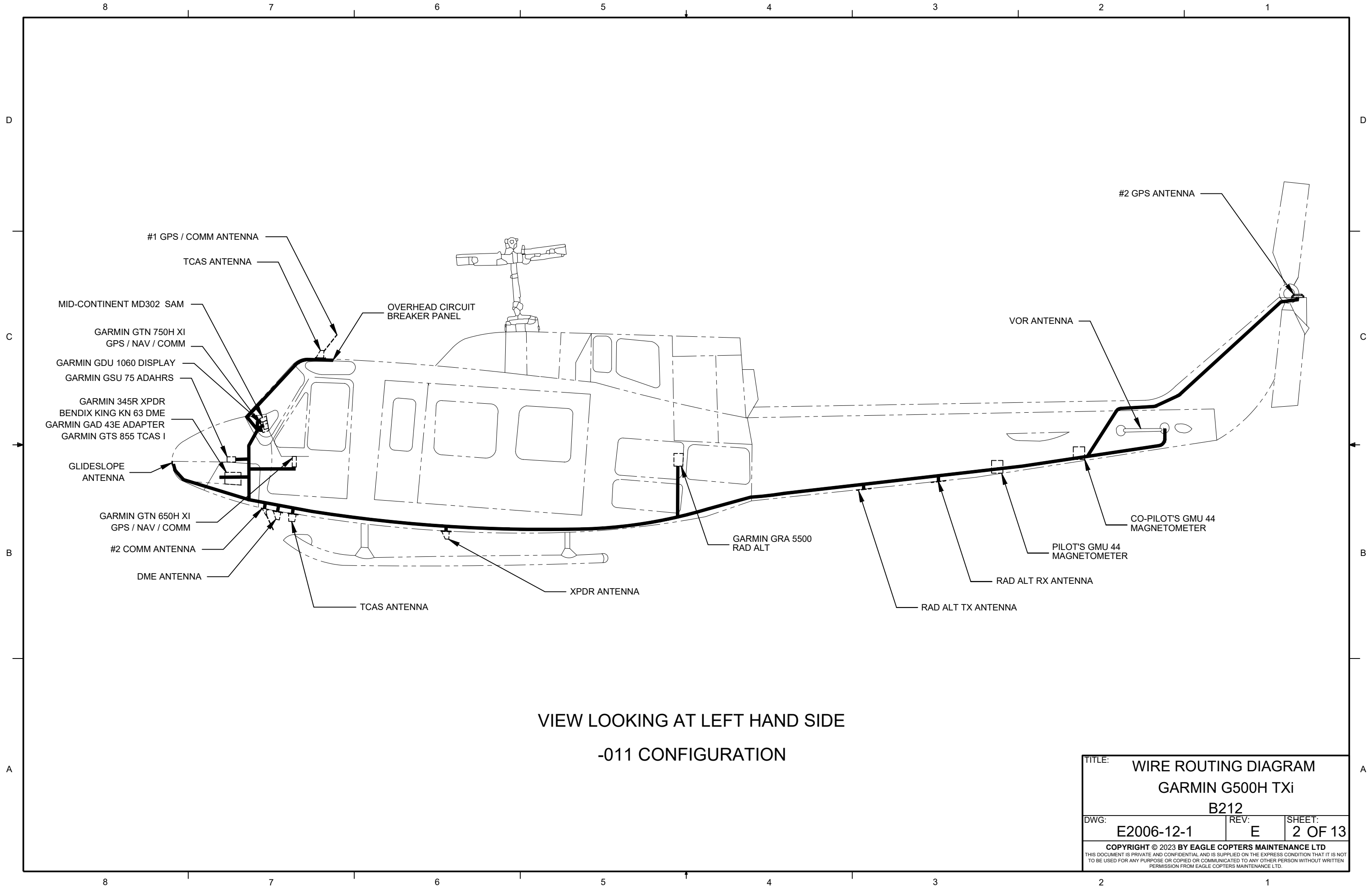
PREPARED	CP
REVIEWED	NF
RELEASED	JP
SCALE:	NTS



COPYRIGHT ©2023 BY EAGLE COPTERS MAINTENANCE LTD  
 THIS DOCUMENT IS PRIVATE AND CONFIDENTIAL AND IS SUPPLIED ON THE EXPRESS CONDITION THAT IT IS NOT TO BE USED FOR ANY PURPOSE OR COPIED OR COMMUNICATED TO ANY OTHER PERSON WITHOUT WRITTEN PERMISSION FROM EAGLE COPTERS MAINTENANCE LTD.

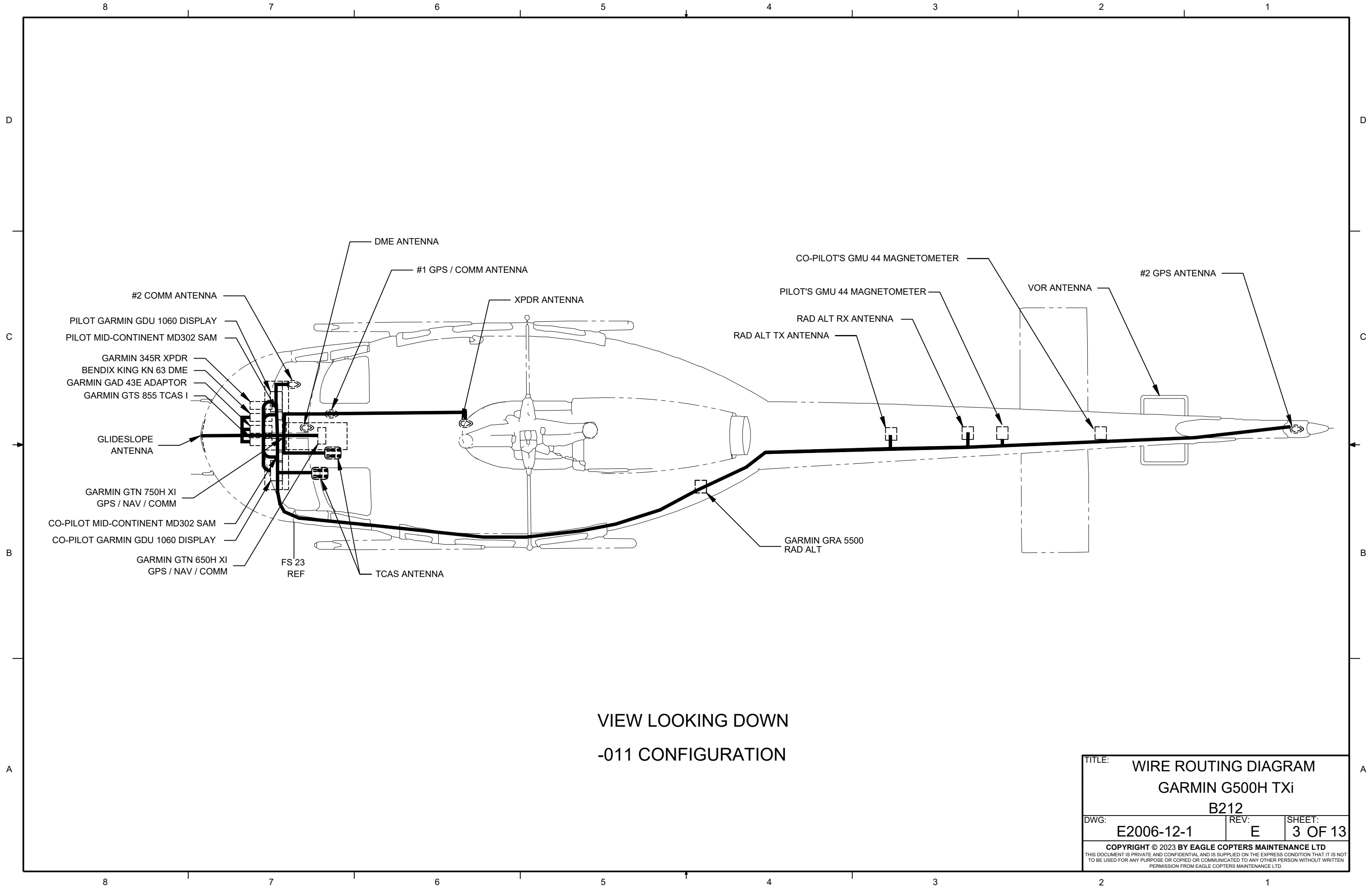
TITLE:	WIRE ROUTING DIAGRAM GARMIN G500H TXi B212	DWG:	E2006-12-1
REV:	E	SHEET:	1 OF 13

THIS DRAWING IS UNCONTROLLED UNLESS OPENED DIRECTLY FROM ECML'S CONTROLLED REPOSITORY



VIEW LOOKING AT LEFT HAND SIDE  
 -011 CONFIGURATION

TITLE:		
WIRE ROUTING DIAGRAM GARMIN G500H TXi B212		
DWG:	REV:	SHEET:
E2006-12-1	E	2 OF 13
<small>COPYRIGHT © 2023 BY EAGLE COPTERS MAINTENANCE LTD          THIS DOCUMENT IS PRIVATE AND CONFIDENTIAL AND IS SUPPLIED ON THE EXPRESS CONDITION THAT IT IS NOT          TO BE USED FOR ANY PURPOSE OR COPIED OR COMMUNICATED TO ANY OTHER PERSON WITHOUT WRITTEN          PERMISSION FROM EAGLE COPTERS MAINTENANCE LTD.</small>		



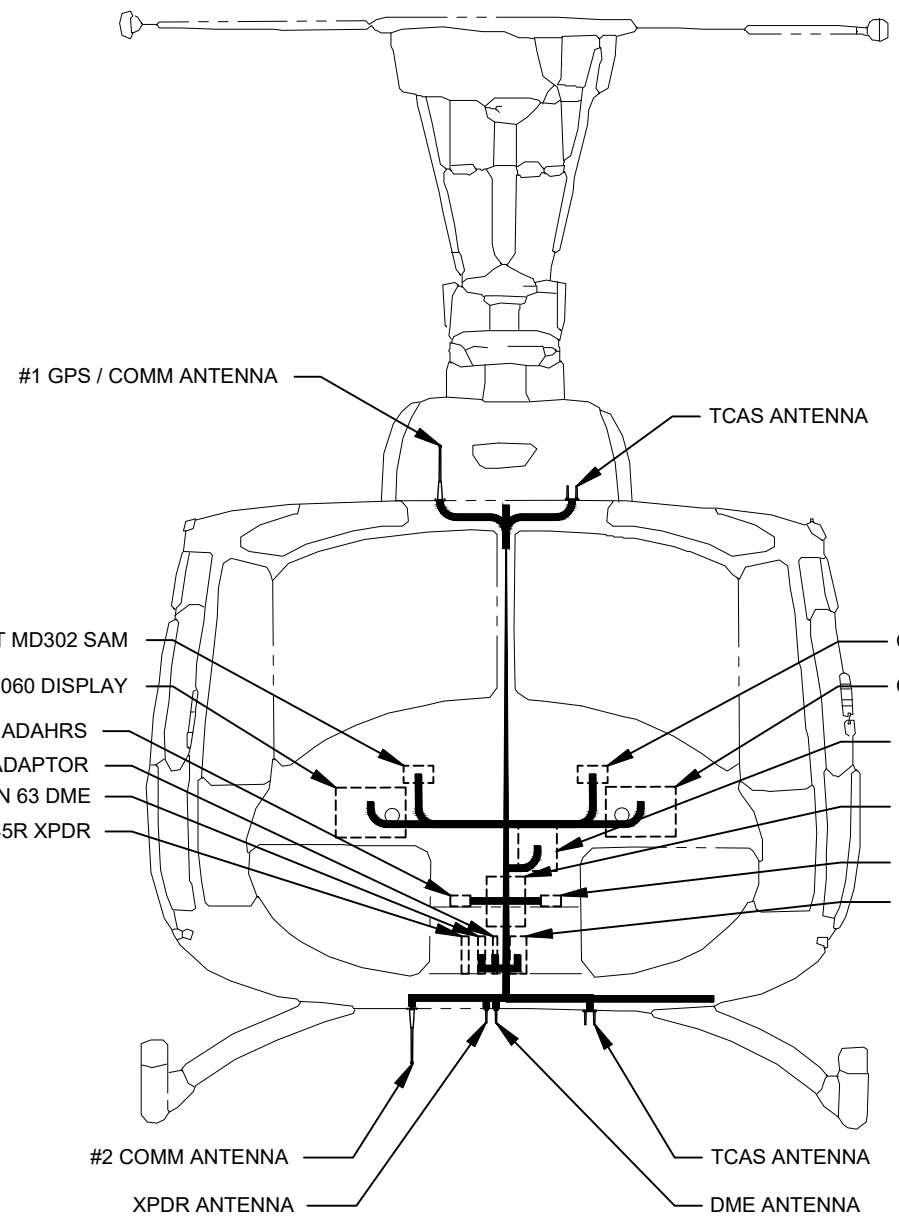
VIEW LOOKING DOWN  
 -011 CONFIGURATION

TITLE: WIRE ROUTING DIAGRAM GARMIN G500H TXi B212		
DWG: E2006-12-1	REV: E	SHEET: 3 OF 13
<small>COPYRIGHT © 2023 BY EAGLE COPTERS MAINTENANCE LTD          THIS DOCUMENT IS PRIVATE AND CONFIDENTIAL AND IS SUPPLIED ON THE EXPRESS CONDITION THAT IT IS NOT          TO BE USED FOR ANY PURPOSE OR COPIED OR COMMUNICATED TO ANY OTHER PERSON WITHOUT WRITTEN          PERMISSION FROM EAGLE COPTERS MAINTENANCE LTD.</small>		

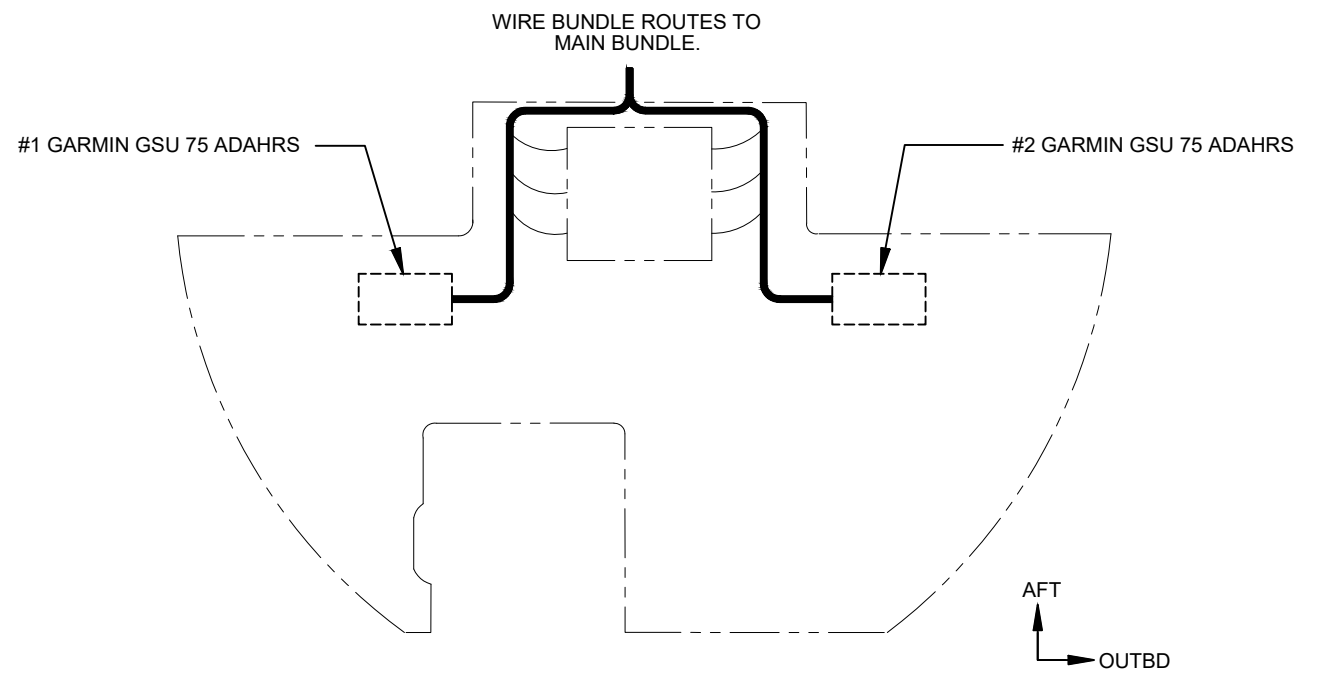
8 7 6 5 4 3 2 1

D  
C  
B  
A

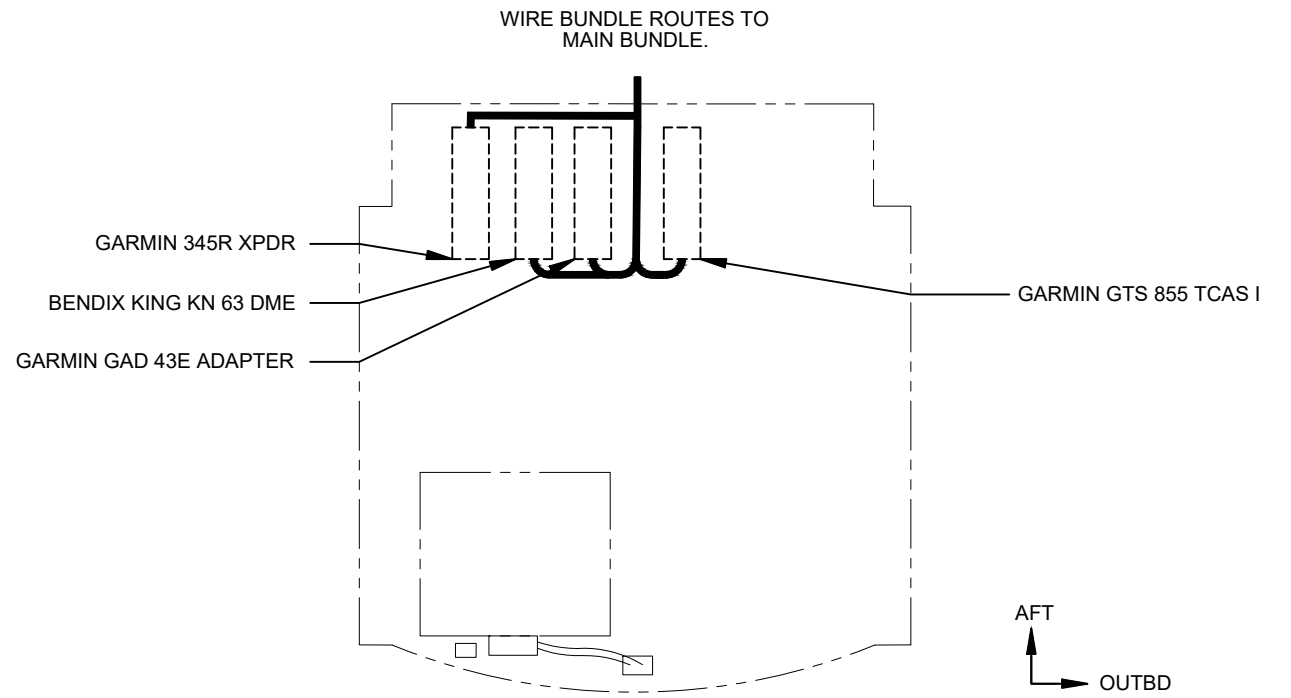
D  
C  
B  
A



VIEW FROM FRONT LOOKING AFT



VIEW OF UPPER SHELF (LOOKING DOWN)

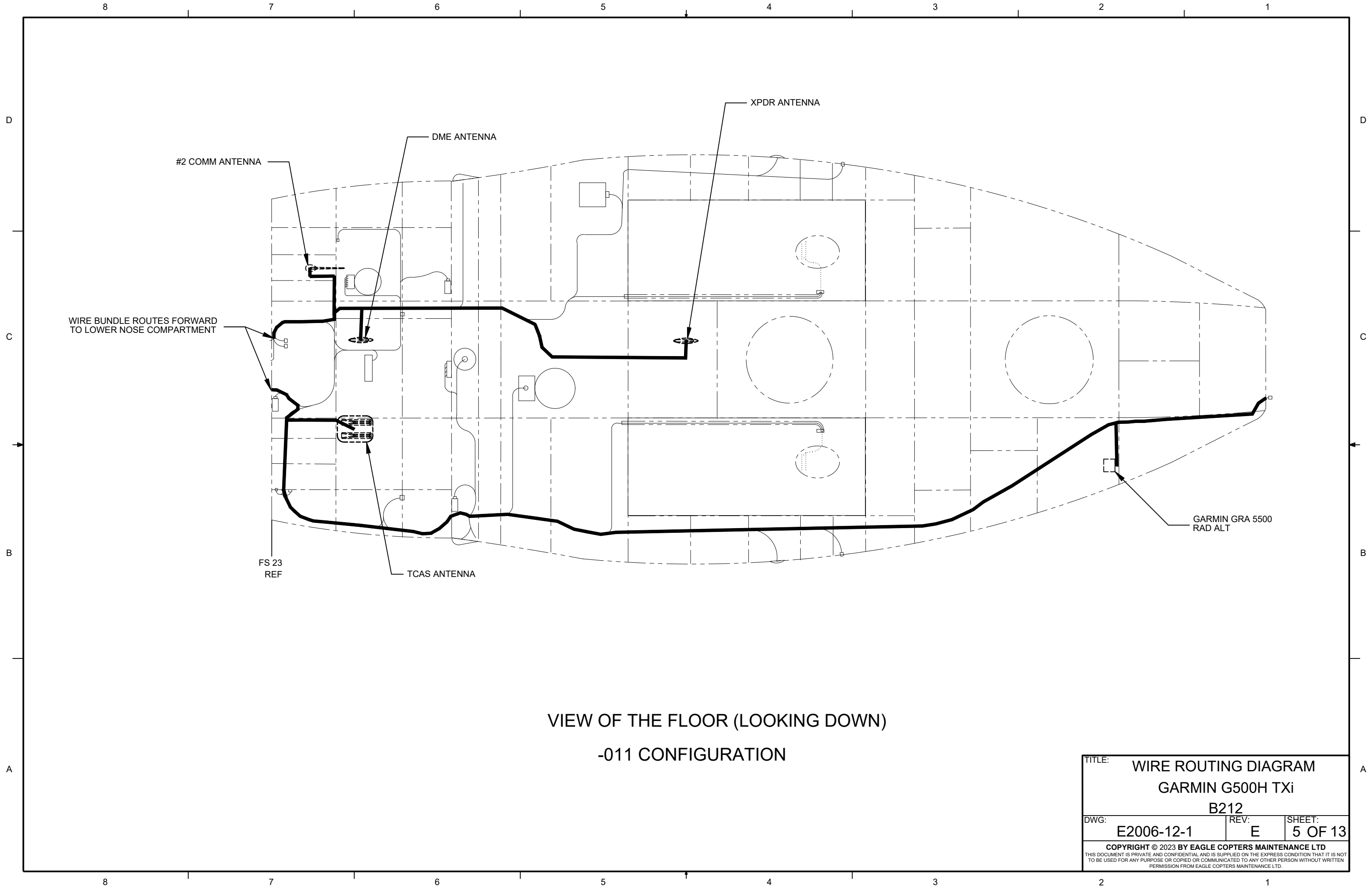


VIEW OF LOWER SHELF (LOOKING DOWN)

-011 CONFIGURATION

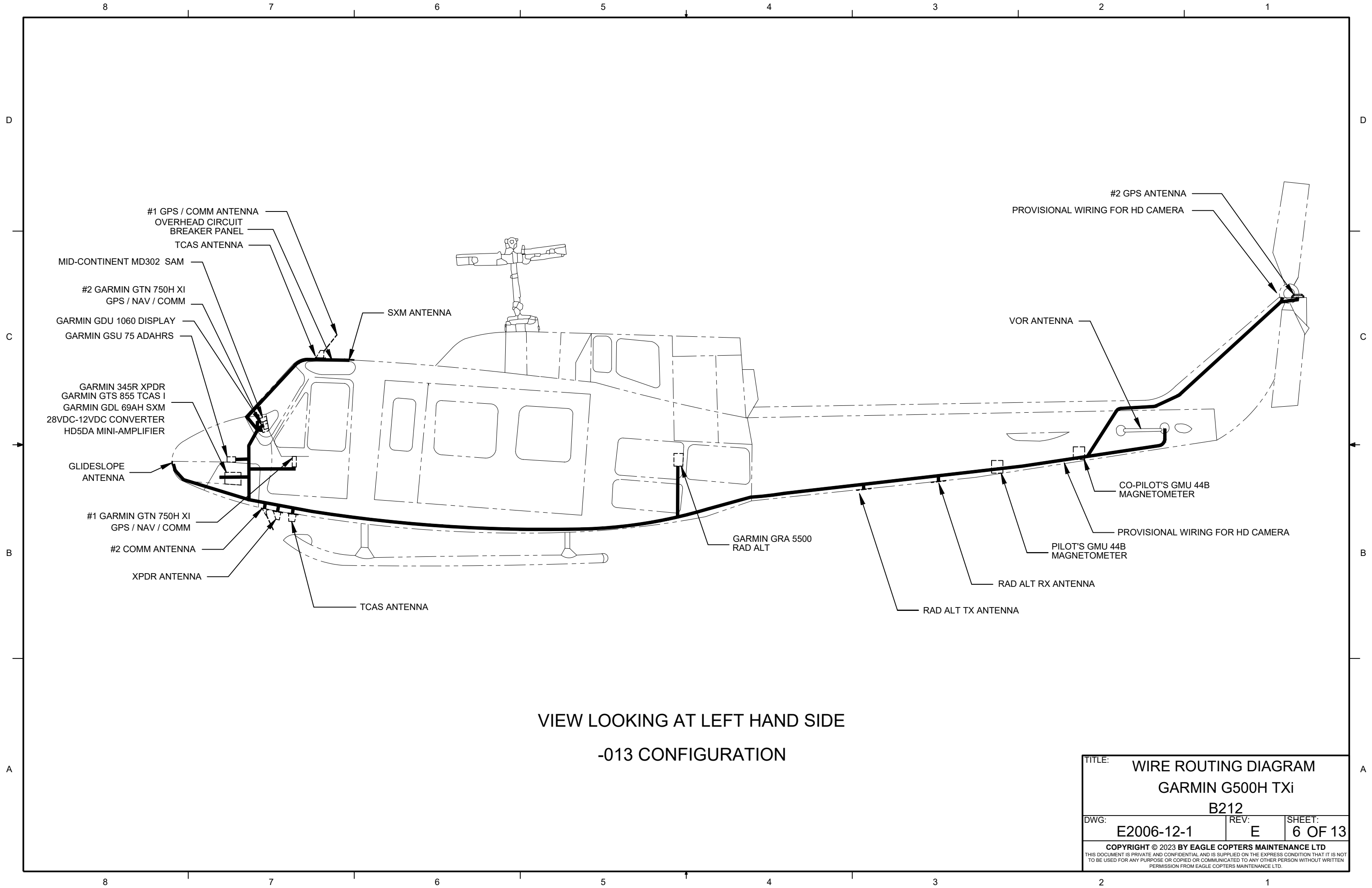
TITLE: WIRE ROUTING DIAGRAM		
GARMIN G500H TXi		
B212		
DWG: E2006-12-1	REV: E	SHEET: 4 OF 13
<small>COPYRIGHT © 2023 BY EAGLE COPTERS MAINTENANCE LTD          THIS DOCUMENT IS PRIVATE AND CONFIDENTIAL AND IS SUPPLIED ON THE EXPRESS CONDITION THAT IT IS NOT TO BE USED FOR ANY PURPOSE OR COPIED OR COMMUNICATED TO ANY OTHER PERSON WITHOUT WRITTEN PERMISSION FROM EAGLE COPTERS MAINTENANCE LTD.</small>		

8 7 6 5 4 3 2 1



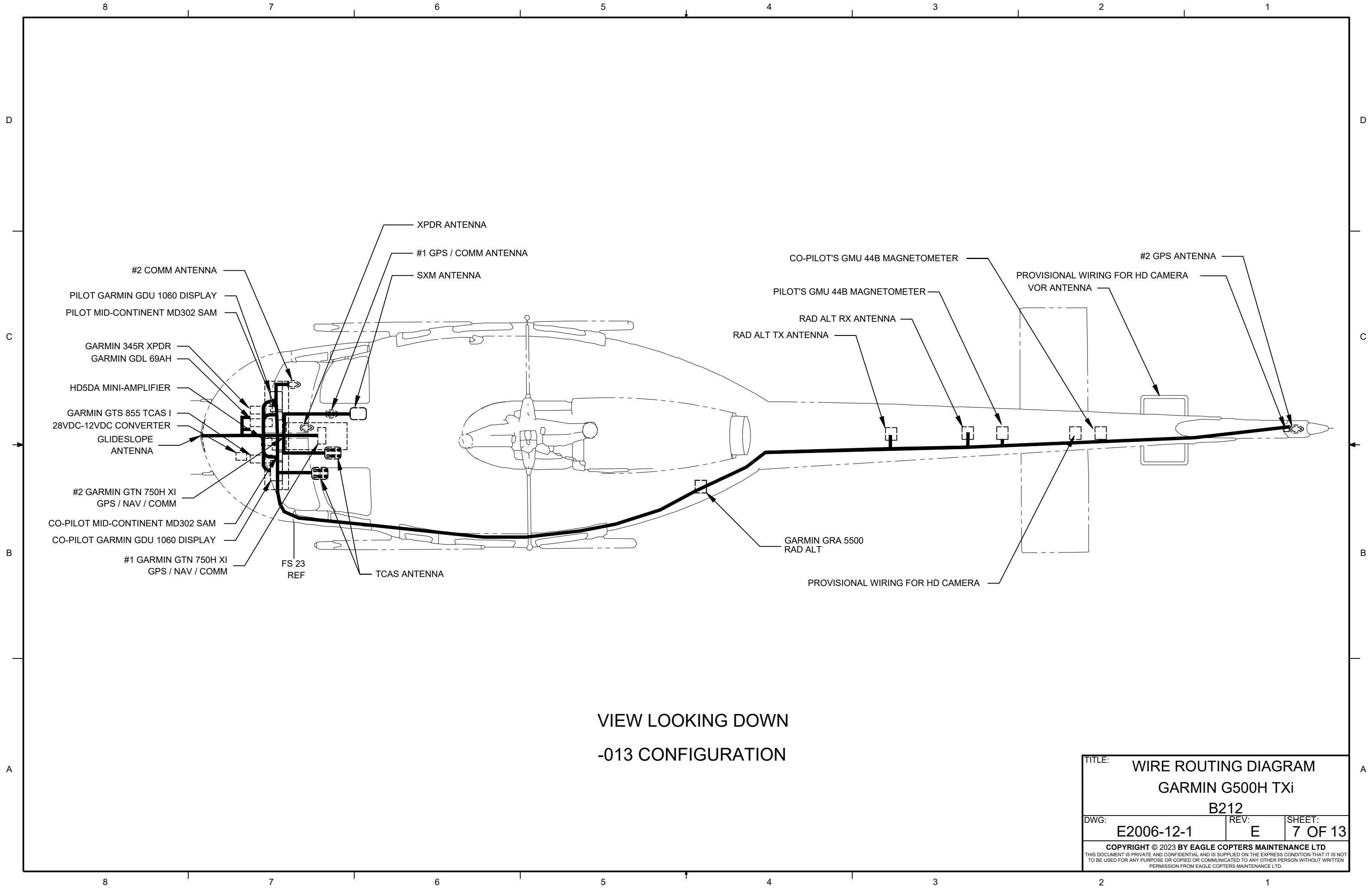
VIEW OF THE FLOOR (LOOKING DOWN)  
 -011 CONFIGURATION

TITLE: WIRE ROUTING DIAGRAM		
GARMIN G500H TXi		
B212		
DWG: E2006-12-1	REV: E	SHEET: 5 OF 13
<small>COPYRIGHT © 2023 BY EAGLE COPTERS MAINTENANCE LTD          THIS DOCUMENT IS PRIVATE AND CONFIDENTIAL AND IS SUPPLIED ON THE EXPRESS CONDITION THAT IT IS NOT TO BE USED FOR ANY PURPOSE OR COPIED OR COMMUNICATED TO ANY OTHER PERSON WITHOUT WRITTEN PERMISSION FROM EAGLE COPTERS MAINTENANCE LTD.</small>		



VIEW LOOKING AT LEFT HAND SIDE  
 -013 CONFIGURATION

TITLE: WIRE ROUTING DIAGRAM		
GARMIN G500H TXi		
B212		
DWG: E2006-12-1	REV: E	SHEET: 6 OF 13
<small>COPYRIGHT © 2023 BY EAGLE COPTERS MAINTENANCE LTD        THIS DOCUMENT IS PRIVATE AND CONFIDENTIAL AND IS SUPPLIED ON THE EXPRESS CONDITION THAT IT IS NOT TO BE USED FOR ANY PURPOSE OR COPIED OR COMMUNICATED TO ANY OTHER PERSON WITHOUT WRITTEN PERMISSION FROM EAGLE COPTERS MAINTENANCE LTD.</small>		



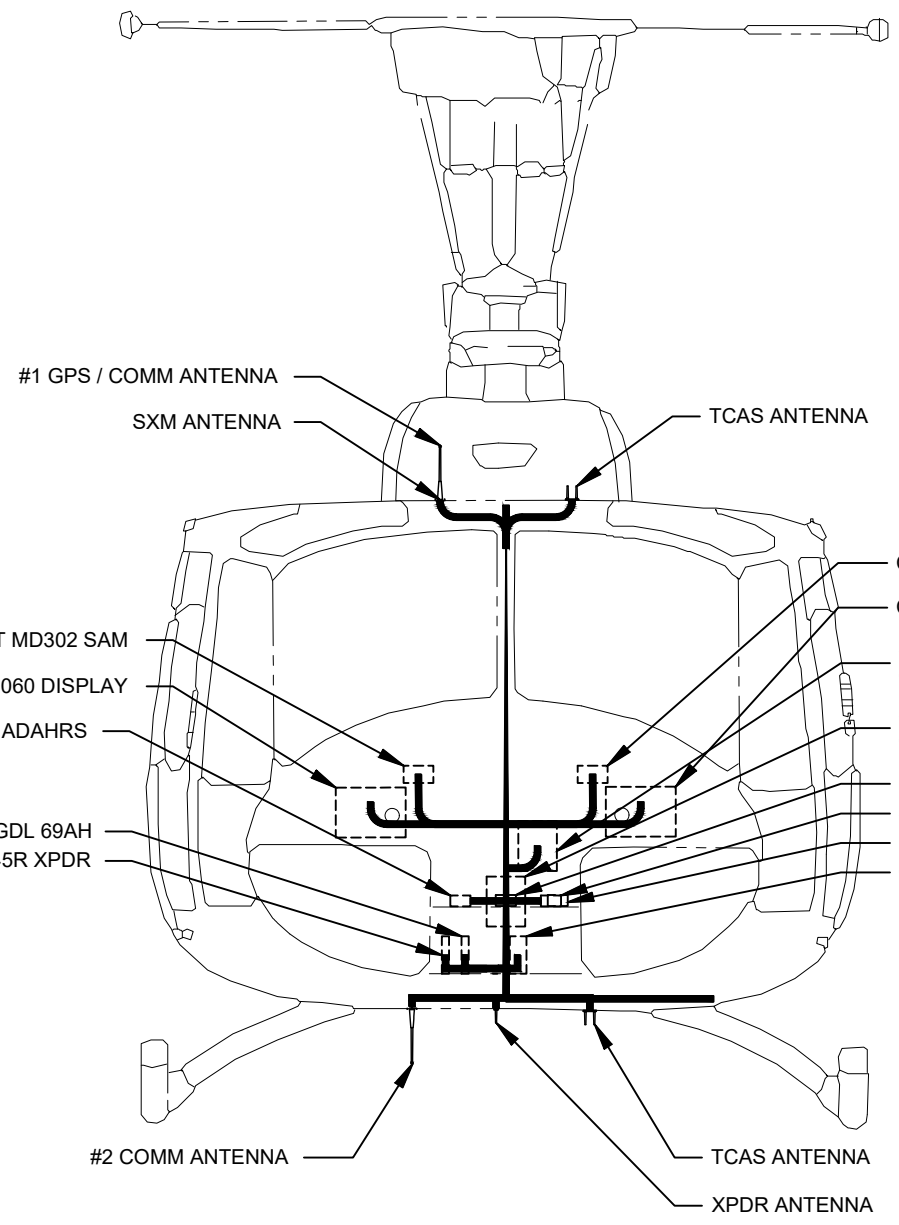
VIEW LOOKING DOWN  
-013 CONFIGURATION

TITLE: WIRE ROUTING DIAGRAM GARMIN G500H TXi B212		
DWG: E2006-12-1	REV: E	SHEET: 7 OF 13
<small>COPYRIGHT © 2023 BY EAGLE COPTERS MAINTENANCE LTD THIS DOCUMENT IS PRIVATE AND CONFIDENTIAL AND IS SUPPLIED ON THE EXPRESS CONDITION THAT IT IS NOT TO BE USED FOR ANY PURPOSE OR COPIED OR COMMUNICATED TO ANY OTHER PERSON WITHOUT WRITTEN PERMISSION FROM EAGLE COPTERS MAINTENANCE LTD.</small>		

- #2 COMM ANTENNA
- PILOT GARMIN GDU 1060 DISPLAY
- PILOT MID-CONTINENT MD302 SAM
- GARMIN 345R XPDR
- GARMIN GDL 69AH
- HD5DA MINI-AMPLIFIER
- GARMIN GTS 855 TCAS I
- 28VDC-12VDC CONVERTER
- GLIDESLOPE ANTENNA
- #2 GARMIN GTN 750H XI GPS / NAV / COMM
- CO-PILOT MID-CONTINENT MD302 SAM
- CO-PILOT GARMIN GDU 1060 DISPLAY
- #1 GARMIN GTN 750H XI GPS / NAV / COMM
- FS 23 REF
- XPDR ANTENNA
- #1 GPS / COMM ANTENNA
- SXM ANTENNA
- TCAS ANTENNA
- CO-PILOT'S GMU 44B MAGNETOMETER
- PILOT'S GMU 44B MAGNETOMETER
- RAD ALT RX ANTENNA
- RAD ALT TX ANTENNA
- GARMIN GRA 5500 RAD ALT
- PROVISIONAL WIRING FOR HD CAMERA
- VOR ANTENNA
- #2 GPS ANTENNA

8 7 6 5 4 3 2 1

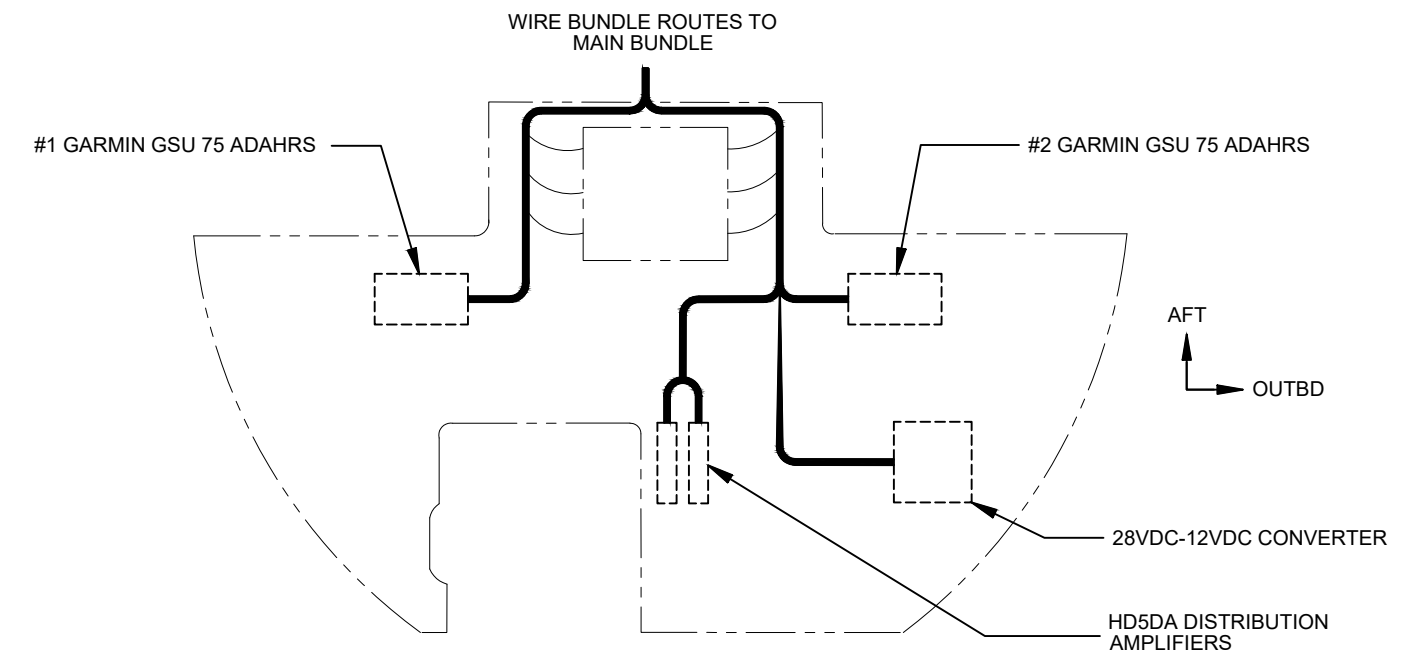
D  
C  
B  
A



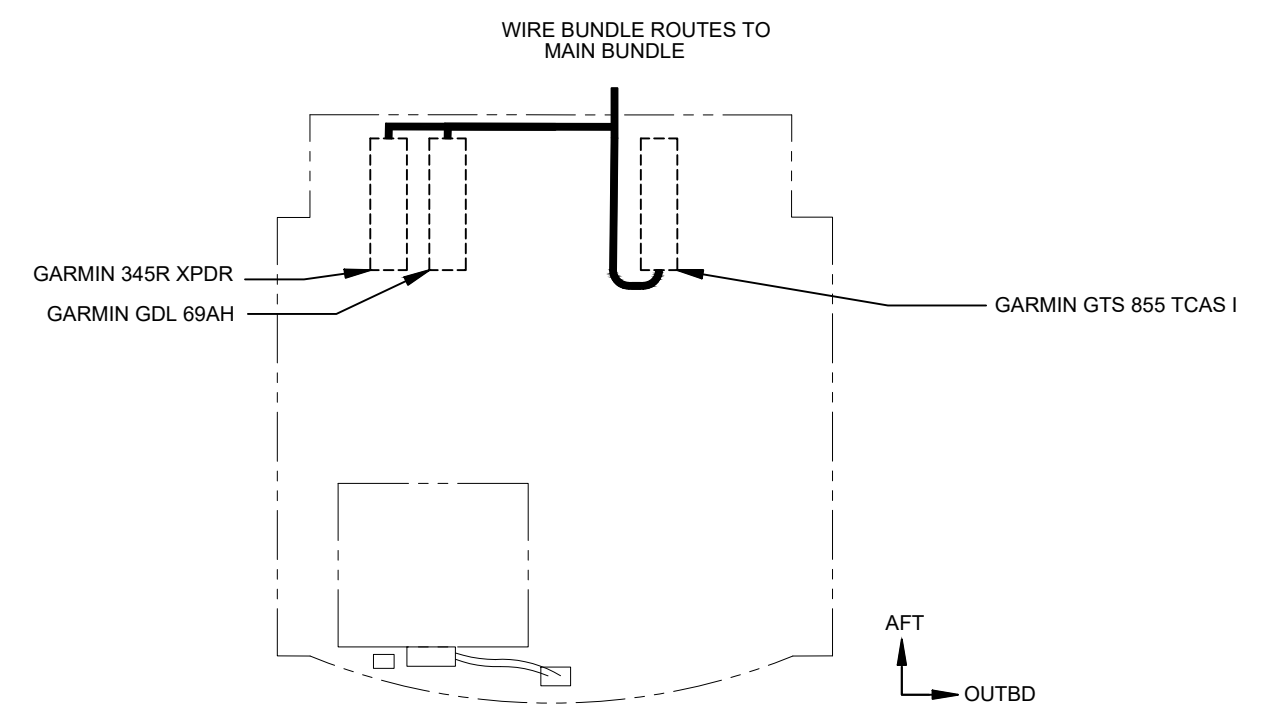
VIEW FROM FRONT LOOKING AFT

- PILOT MID-CONTINENT MD302 SAM
- PILOT GARMIN GDU 1060 DISPLAY
- #1 GARMIN GSU 75 ADAHRS
- GARMIN GDL 69AH
- GARMIN 345R XPDR
- CO-PILOT MID-CONTINENT MD302 SAM
- CO-PILOT GARMIN GDU 1060 DISPLAY
- #2 GARMIN GTN 750H XI GPS / NAV / COMM
- #1 GARMIN GTN 750H XI GPS / NAV / COMM
- HD5DA MINI-AMPLIFIER
- #2 GARMIN GSU 75 ADAHRS
- 28VDC-12VDC CONVERTER
- GARMIN GTS 855 TCAS I

-013 CONFIGURATION



VIEW OF UPPER SHELF (LOOKING DOWN)

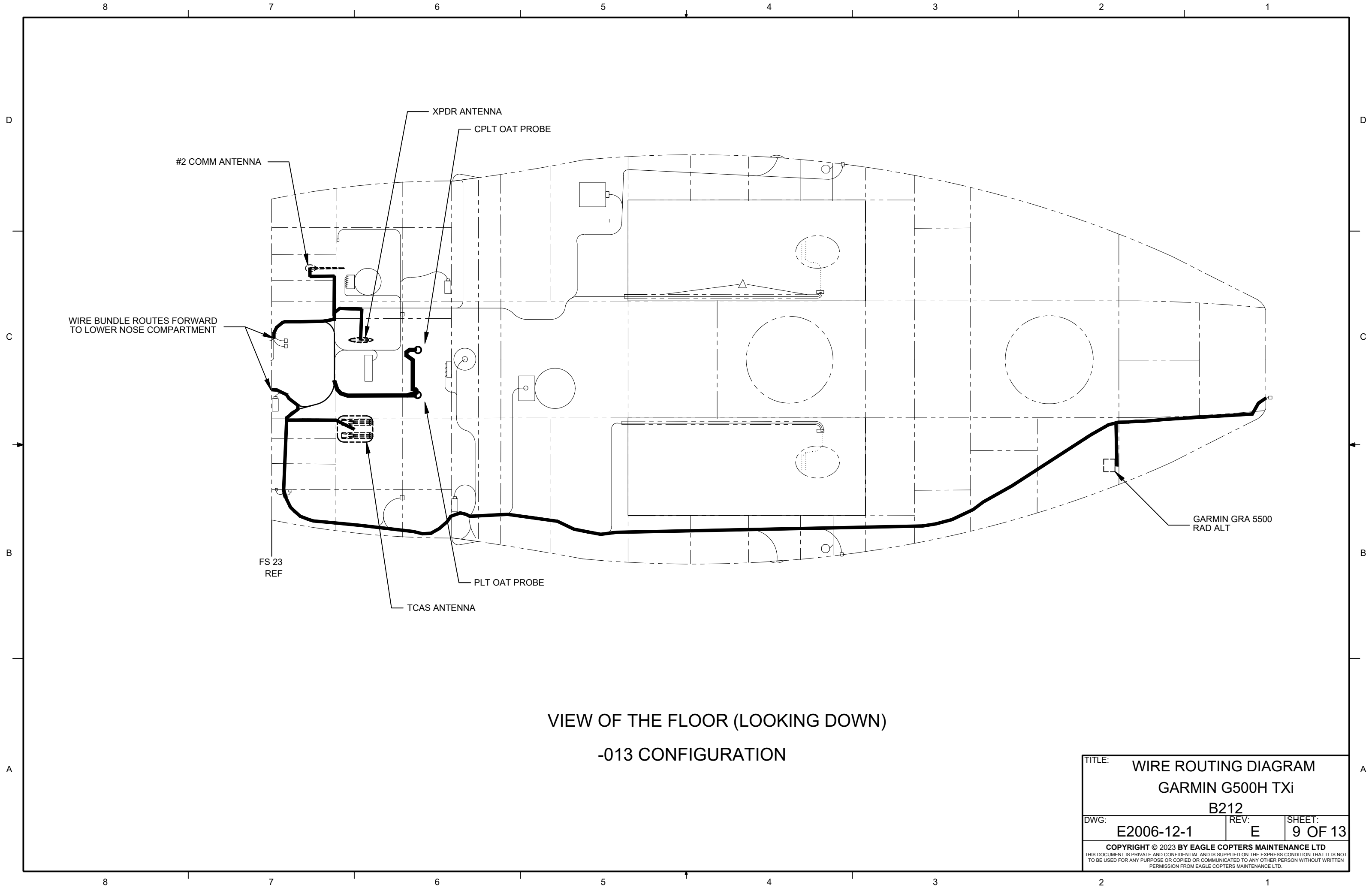


VIEW OF LOWER SHELF (LOOKING DOWN)

TITLE: WIRE ROUTING DIAGRAM		
GARMIN G500H TXi		
B212		
DWG: E2006-12-1	REV: E	SHEET: 8 OF 13
<small>COPYRIGHT © 2023 BY EAGLE COPTERS MAINTENANCE LTD          THIS DOCUMENT IS PRIVATE AND CONFIDENTIAL AND IS SUPPLIED ON THE EXPRESS CONDITION THAT IT IS NOT TO BE USED FOR ANY PURPOSE OR COPIED OR COMMUNICATED TO ANY OTHER PERSON WITHOUT WRITTEN PERMISSION FROM EAGLE COPTERS MAINTENANCE LTD.</small>		

8 7 6 5 4 3 2 1





WIRE BUNDLE ROUTES FORWARD TO LOWER NOSE COMPARTMENT

#2 COMM ANTENNA

XPDR ANTENNA

CPLT OAT PROBE

FS 23 REF

PLT OAT PROBE

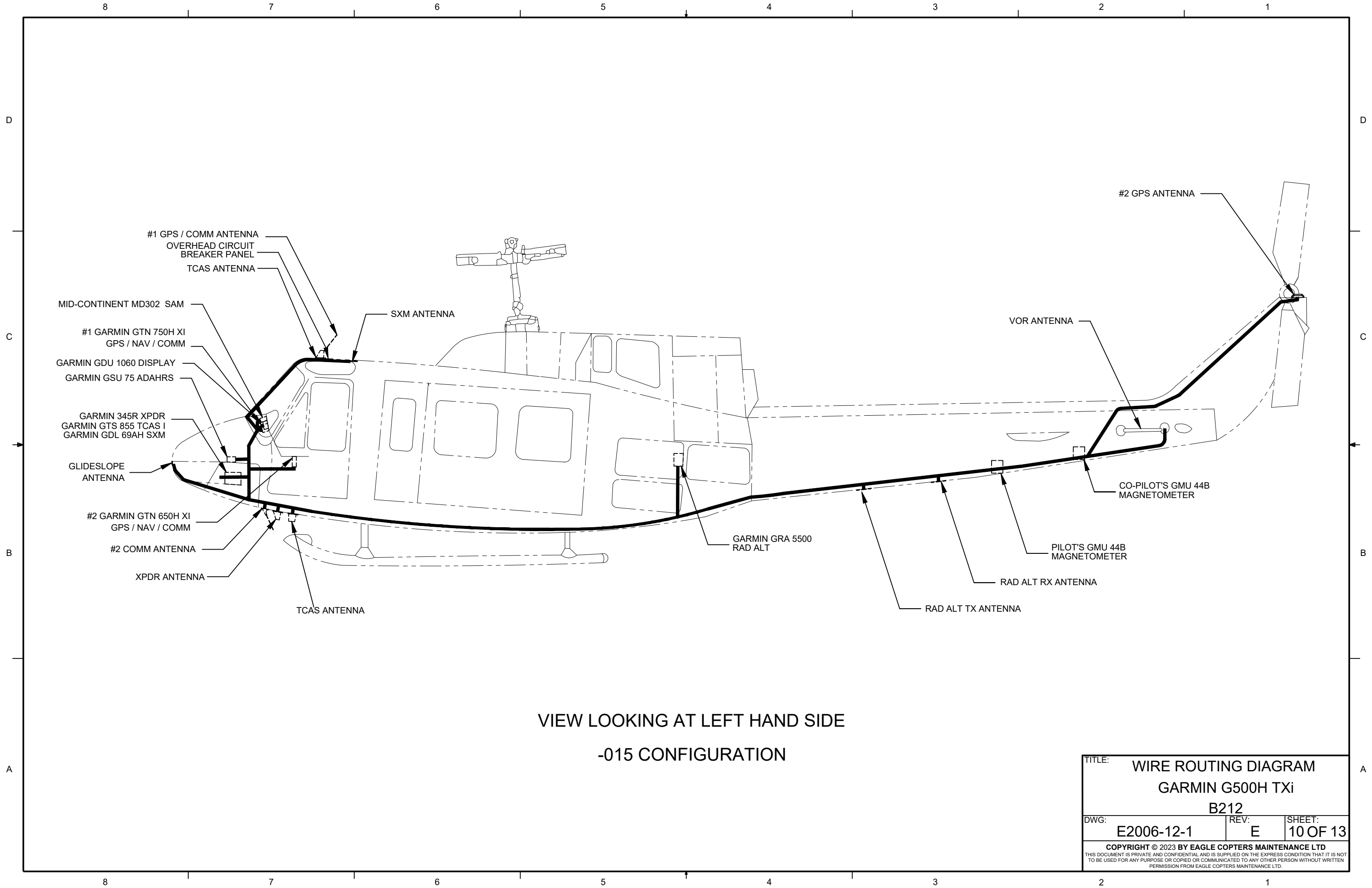
TCAS ANTENNA

GARMIN GRA 5500 RAD ALT

VIEW OF THE FLOOR (LOOKING DOWN)

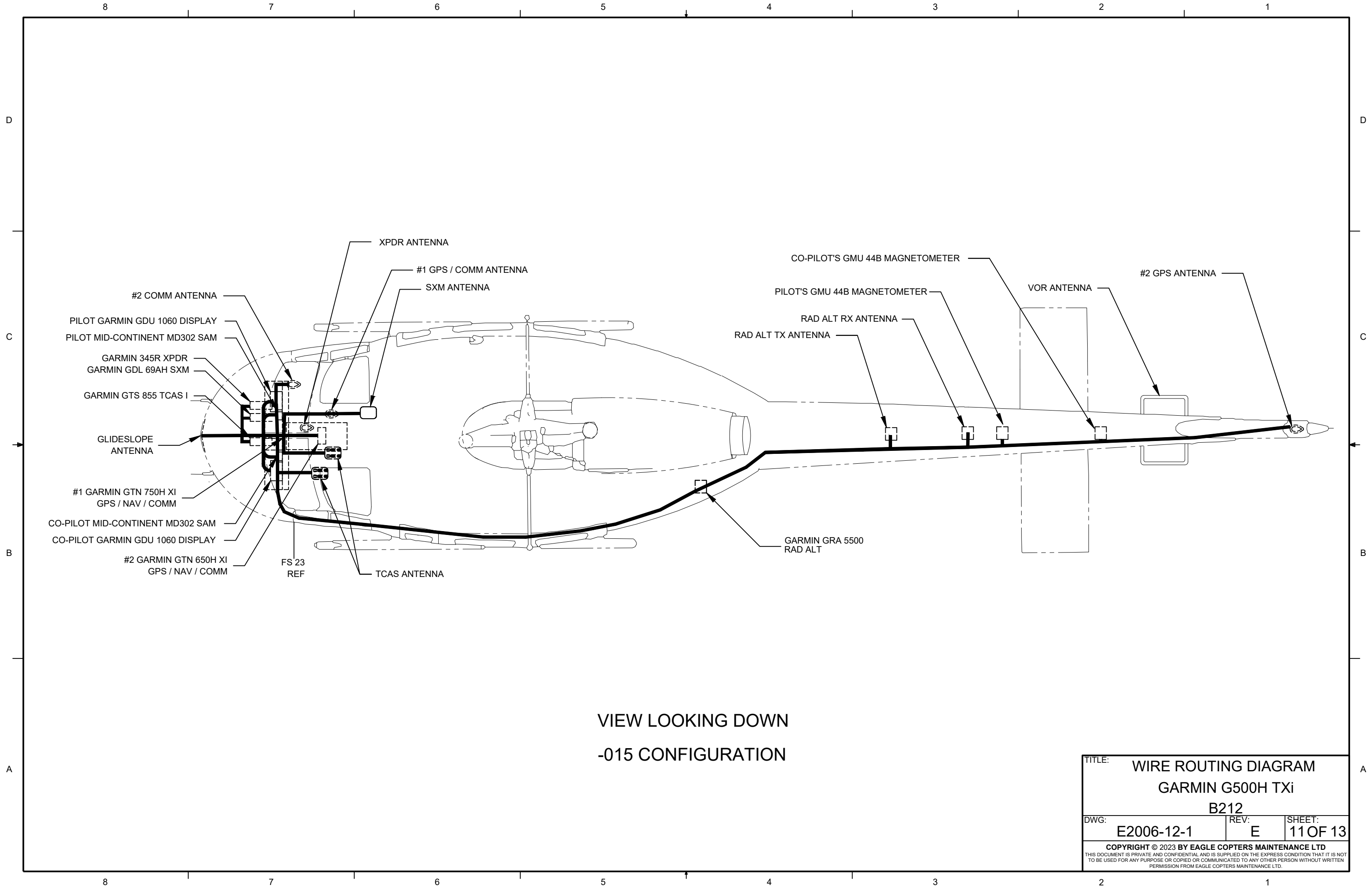
-013 CONFIGURATION

TITLE:		
WIRE ROUTING DIAGRAM		
GARMIN G500H TXi		
B212		
DWG:	REV:	SHEET:
E2006-12-1	E	9 OF 13
<small>COPYRIGHT © 2023 BY EAGLE COPTERS MAINTENANCE LTD          THIS DOCUMENT IS PRIVATE AND CONFIDENTIAL AND IS SUPPLIED ON THE EXPRESS CONDITION THAT IT IS NOT TO BE USED FOR ANY PURPOSE OR COPIED OR COMMUNICATED TO ANY OTHER PERSON WITHOUT WRITTEN PERMISSION FROM EAGLE COPTERS MAINTENANCE LTD.</small>		



VIEW LOOKING AT LEFT HAND SIDE  
 -015 CONFIGURATION

TITLE:		
WIRE ROUTING DIAGRAM		
GARMIN G500H TXi		
B212		
DWG:	REV:	SHEET:
E2006-12-1	E	10 OF 13
<small>COPYRIGHT © 2023 BY EAGLE COPTERS MAINTENANCE LTD        THIS DOCUMENT IS PRIVATE AND CONFIDENTIAL AND IS SUPPLIED ON THE EXPRESS CONDITION THAT IT IS NOT TO BE USED FOR ANY PURPOSE OR COPIED OR COMMUNICATED TO ANY OTHER PERSON WITHOUT WRITTEN PERMISSION FROM EAGLE COPTERS MAINTENANCE LTD.</small>		



VIEW LOOKING DOWN  
 -015 CONFIGURATION

TITLE: WIRE ROUTING DIAGRAM GARMIN G500H TXi B212		
DWG: E2006-12-1	REV: E	SHEET: 11 OF 13
<small>COPYRIGHT © 2023 BY EAGLE COPTERS MAINTENANCE LTD          THIS DOCUMENT IS PRIVATE AND CONFIDENTIAL AND IS SUPPLIED ON THE EXPRESS CONDITION THAT IT IS NOT          TO BE USED FOR ANY PURPOSE OR COPIED OR COMMUNICATED TO ANY OTHER PERSON WITHOUT WRITTEN          PERMISSION FROM EAGLE COPTERS MAINTENANCE LTD.</small>		

8 7 6 5 4 3 2 1

D  
C  
B  
A

#1 GPS / COMM ANTENNA  
SXM ANTENNA  
TCAS ANTENNA

PILOT MID-CONTINENT MD302 SAM  
PILOT GARMIN GDU 1060 DISPLAY  
#1 GARMIN GSU 75 ADAHRS  
GARMIN GDL 69AH SXM  
GARMIN 345R XPDR  
#2 COMM ANTENNA

CO-PILOT MID-CONTINENT MD302 SAM  
CO-PILOT GARMIN GDU 1060 DISPLAY  
#1 GARMIN GTN 750H XI  
GPS / NAV / COMM  
#2 GARMIN GTN 650H XI  
GPS / NAV / COMM  
#2 GARMIN GSU 75 ADAHRS  
GARMIN GTS 855 TCAS I  
TCAS ANTENNA  
XPDR ANTENNA

VIEW FROM FRONT LOOKING AFT

-015 CONFIGURATION

WIRE BUNDLE ROUTES TO MAIN BUNDLE.

#1 GARMIN GSU 75 ADAHRS  
#2 GARMIN GSU 75 ADAHRS

AFT  
OUTBD

VIEW OF UPPER SHELF (LOOKING DOWN)

WIRE BUNDLE ROUTES TO MAIN BUNDLE.

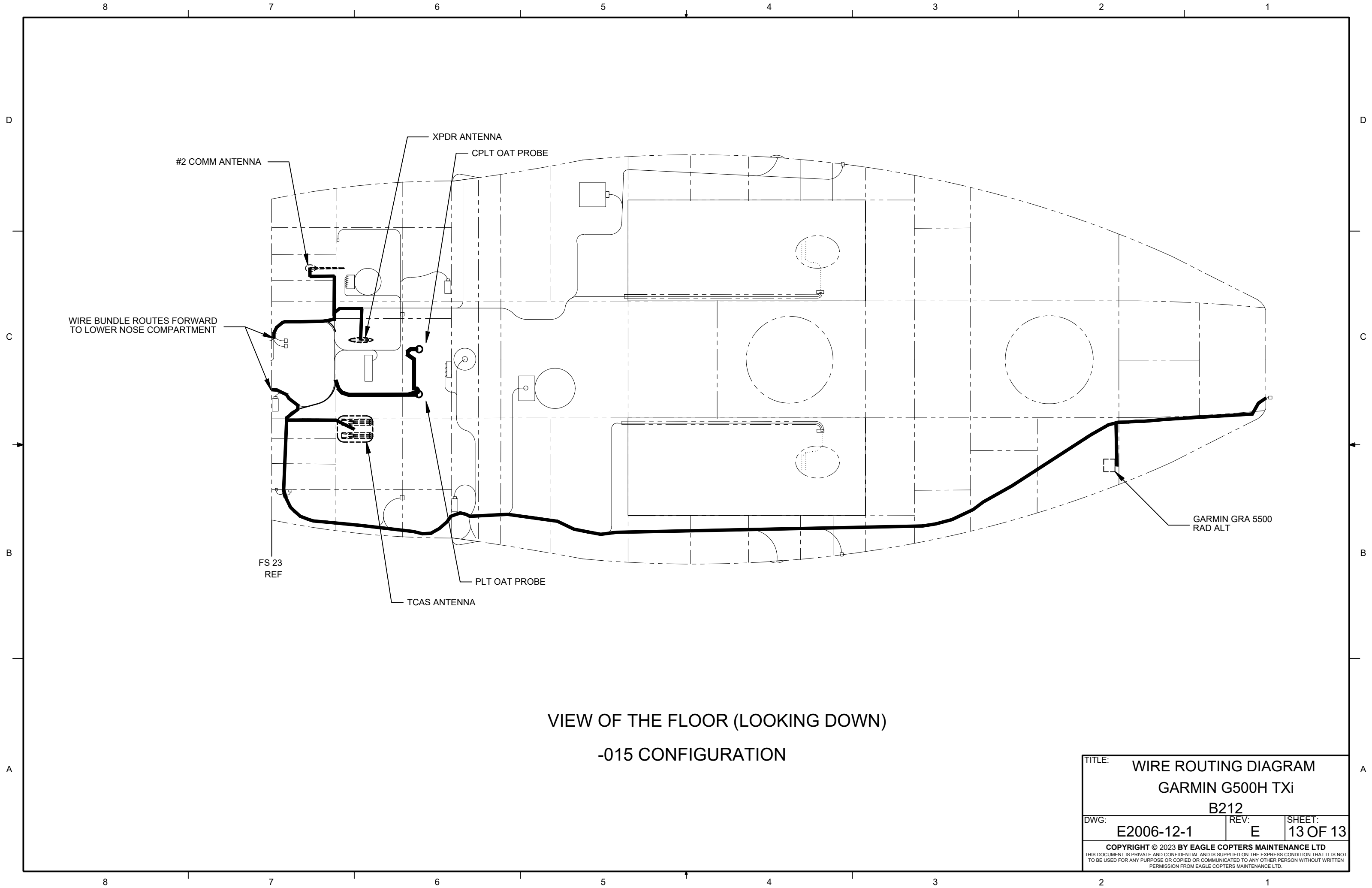
GARMIN 345R XPDR  
GARMIN GDL 69AH  
GARMIN GTS 855 TCAS I

AFT  
OUTBD

VIEW OF LOWER SHELF (LOOKING DOWN)

TITLE: WIRE ROUTING DIAGRAM GARMIN G500H TXi B212		
DWG: E2006-12-1	REV: E	SHEET: 12 OF 13
<small>COPYRIGHT © 2023 BY EAGLE COPTERS MAINTENANCE LTD THIS DOCUMENT IS PRIVATE AND CONFIDENTIAL AND IS SUPPLIED ON THE EXPRESS CONDITION THAT IT IS NOT TO BE USED FOR ANY PURPOSE OR COPIED OR COMMUNICATED TO ANY OTHER PERSON WITHOUT WRITTEN PERMISSION FROM EAGLE COPTERS MAINTENANCE LTD.</small>		

8 7 6 5 4 3 2 1



WIRE BUNDLE ROUTES FORWARD TO LOWER NOSE COMPARTMENT

#2 COMM ANTENNA

XPDR ANTENNA

CPLT OAT PROBE

FS 23 REF

TCAS ANTENNA

PLT OAT PROBE

GARMIN GRA 5500 RAD ALT

VIEW OF THE FLOOR (LOOKING DOWN)

-015 CONFIGURATION

TITLE: WIRE ROUTING DIAGRAM		
GARMIN G500H TXi		
B212		
DWG: E2006-12-1	REV: E	SHEET: 13 OF 13
<small>COPYRIGHT © 2023 BY EAGLE COPTERS MAINTENANCE LTD          THIS DOCUMENT IS PRIVATE AND CONFIDENTIAL AND IS SUPPLIED ON THE EXPRESS CONDITION THAT IT IS NOT TO BE USED FOR ANY PURPOSE OR COPIED OR COMMUNICATED TO ANY OTHER PERSON WITHOUT WRITTEN PERMISSION FROM EAGLE COPTERS MAINTENANCE LTD.</small>		