

REV	DESCRIPTION	DATE
A	NEW ISSUE	09-09-2021
B	TERMINAL BLOCK PINS REVISED	15-10-2021
C	CONFIG ADDED WITH NO DME AND DUAL GTN 750 XI	16-12-2022
D	ADDED -015 CONFIGURATION	12-02-2024
E	REPLACED ETHERNET CABLE WITH E40424 FOR -013	19-08-2024

NEW WIRE / UNIT  
 EXISTING WIRE / UNIT

	AR (20)	-	31	E40424	CABLE, ETHERNET	PIC	
16	AR (260)	AR (260)	AR (260)	30	M17/60-RG142	CABLE, COAX	MIL SPEC
	1	1	1	29	PE9093	ADAPTER, BULKHEAD BNC	PASTERNAK
	1	1	1	28	011-02045-41	SD DATACARD W/ NAVIGATION	GARMIN
	1	1	1	27	011-00878-04	16 WATT COM ENABLEMENT CARD	GARMIN
	6	6	6	26	190108	CONNECTOR, TNC	PIC
	REF (1)	REF (1)	REF (1)	25	RGS10-48	ANTENNA, GLIDESLOPE	DAYTON-GRANGER
	1	1	1	24	RHT-615-0236	CONNECTOR, BULKHEAD TNC	AMPHENOL
	AR (20)	-	AR (20)	23	392404	CABLE, ETHERNET	CARLISLE
	16	16	16	22	190112	CONNECTOR, BNC	PIC
15	AR (40)	AR (40)	AR (40)	21	S44193	CABLE, COAX	PIC
	1	1	1	20	CI-292-2	ANTENNA, COMM	COMANT
	REF (1)	REF (1)	REF (1)	19	013-00235-00	ANTENNA, GPS	GARMIN
	REF (1)	REF (1)	REF (1)	18	DMN4-4	ANTENNA, VOR/LOC	DORNE AND MARGOLIN
	1	1	1	17	CI-292-1	ANTENNA, GPS/COMM	COMANT
	1	1	1	16	ZFSC-2-1B+	COXIAL POWER SPLITTER	MINI CIRCUITS
	1	1	1	15	CI 507	ANTENNA, DIPLEXER	COMANT
	1	-	1	14	011-04631-00	GTN 650 XI	GARMIN
	-	-	-	13	NOT REQUIRED	NOT REQUIRED	NOT REQUIRED
	2	2	2	12	011-00979-03	KIT, CONFIGURATION MODULE	GARMIN
13 14	2	2	2	11	125-00084-00	BACKSHELL	GARMIN
13 14	2	2	2	10	125-00083-00	BACKSHELL	GARMIN
13 14	2	2	2	9	125-00082-00	BACKSHELL	GARMIN
13 14	2	2	2	8	125-00085-00	BACKSHELL	GARMIN
13 14	AR (420)	AR (420)	AR (420)	7	336-00021-00	CONTACT, PIN	GARMIN
13 14	2	2	2	6	330-00185-62	CONNECTOR, PLUG	GARMIN
13 14	2	2	2	5	330-00185-44	CONNECTOR, PLUG	GARMIN
13 14	2	2	2	4	330-00185-26	CONNECTOR, PLUG	GARMIN
13 14	2	2	2	3	330-00185-78	CONNECTOR, PLUG	GARMIN
	4	4	4	2	MS22073-5	CIRCUIT BREAKER, 5A	MIL SPEC
	1	1	1	1	011-04634-00	GTN 750 XI	GARMIN
					-015	GTN 650/750 XI WITHOUT DME INSTALLED	
					-013	DUAL GTN 750 XI WITHOUT DME INSTALLED	
					-011	GTN 650/750 XI WITH DME INSTALLED	
	-015 QTY	-013 QTY	-011 QTY	ITEM	PART NUMBER	DESCRIPTION	REMARKS

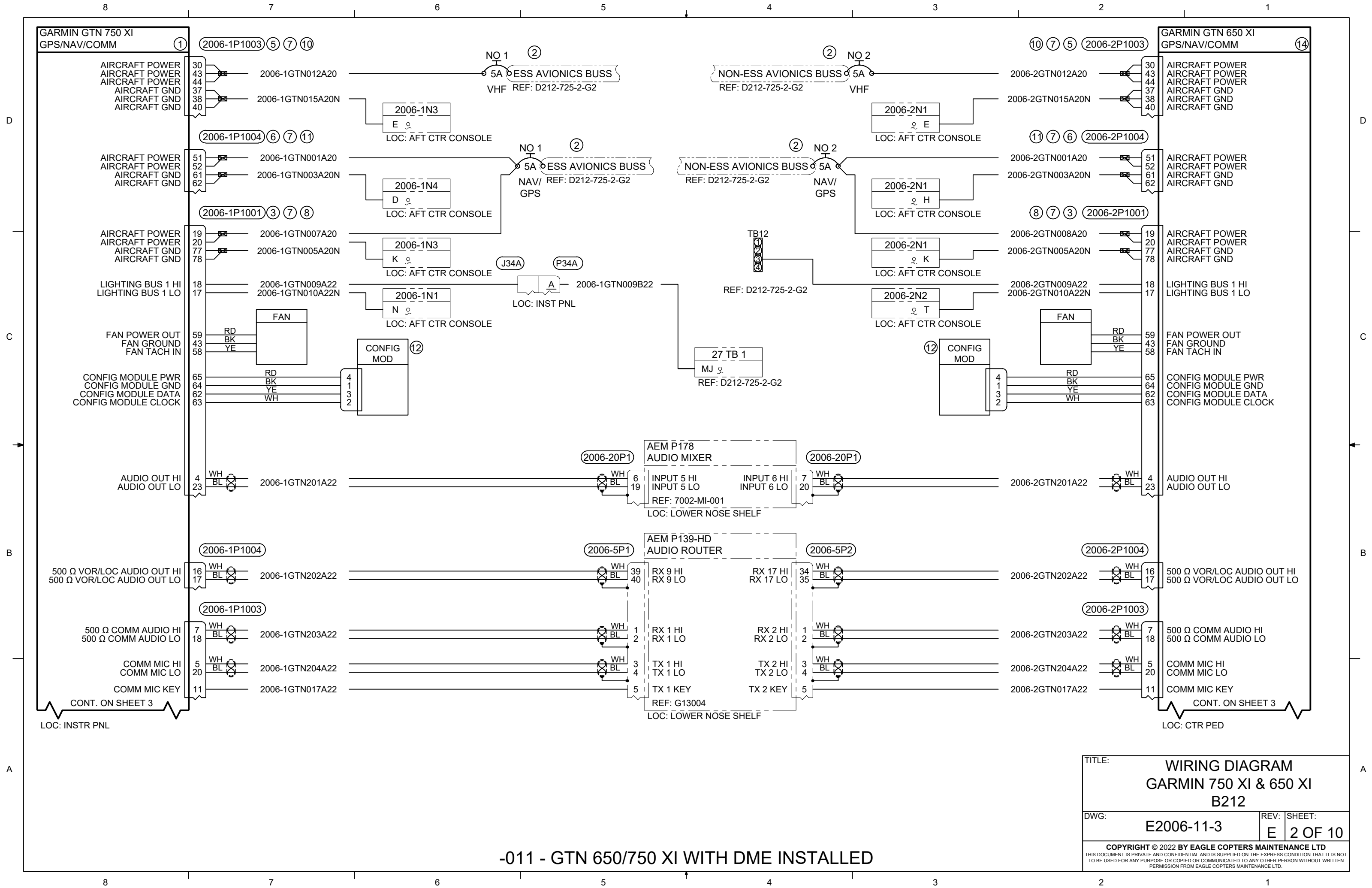
NOTES:

- PERFORM ALL WORK IN ACCORDANCE WITH BELL HELICOPTER STANDARD PRACTICES MANUAL BHT-ELEC-SPM.
- ALL NEW UNSHIELDED WIRE USE M22759/41-(XX)-9 OR EQUIVALENT TYPE WIRE. (M22759/41-(XX)-9 IS NOT INTENDED TO BE USED IN SOLDER APPLICATIONS, SOLDERABILITY CAN BE ACHIEVED WITH THE PROPER SOLDER. USE CRIMP SPLICES FOR REPAIR). ALL WIRES 22 AWG UNLESS OTHERWISE SPECIFIED BY WIRE CODE. ALL JUMPERS TO BE LESS THAN 6 INCHES.
- ALL NEW SHIELDED WIRE USE M27500-(XX)SM(X)N23 OR EQUIVALENT TYPE WIRE. (M27500-(XX)SM(X)N23 IS NOT INTENDED TO BE USED IN SOLDER APPLICATIONS, SOLDERABILITY CAN BE ACHIEVED WITH THE PROPER SOLDER. USE CRIMP SPLICES FOR REPAIR). SOLDER SLEEVES SHALL USE SN96 SOLDER, USE P/N S200-X-00 OR EQUIVALENT.
- ALL SHIELD TERMINATIONS SHALL BE INSTALLED PER MIL-S-83519 OR EQUIVALENT. SHIELD TERMINATIONS SHOWN AS "DAISY-CHAINED" ARE FOR DRAWING CLARITY ONLY. INDIVIDUAL SHIELD EXTENSIONS SHALL BE SPLICED AT A COMMON TIE POINT TO THE TERMINATING WIRES. THE BACK SHELL OR AIRFRAME GROUND MAY BE USED.
- ALL AIRFRAME GROUNDS SHALL BE VIA AMP LUG OR GROUNDING BLOCK AND PROVIDE SEPARATE GROUND STUD LOCATIONS FOR DC POWER GROUNDS, AC POWER GROUNDS, CHASSIS GROUNDS, SIGNAL GROUNDS AND SHIELD GROUNDS.
- ALL EQUIPMENT BONDING TO ADJACENT AIRFRAME STRUCTURE TO BE 0.003 OHM OR LESS. ALL ELECTRICAL GROUNDING AND BONDING TO BE INSTALLED IN ACCORDANCE WITH THE LATEST REVISION OF BHT-ELEC-SPM CHAPTER 8.
- ALL TERMINALS TO BE INSTALLED IN ACCORDANCE WITH THE LATEST REVISION OF BHT-ELEC-SPM CHAPTER 4 PARAGRAPH 4-9.
- ALL CONNECTORS TO BE INSTALLED IN ACCORDANCE WITH THE LATEST REVISION OF BHT-ELEC-SPM CHAPTER 5 AND / OR CIRCULAR CONNECTOR INSTALLATION INSTRUCTIONS (GARMIN DOCUMENT 190-00313-12). ENSURE ALL UNUSED CONNECTOR CONTACTS ARE FILLED WITH SPARE PINS/SOCKETS OR PLASTIC GROMMET SEALING PLUGS. ENSURE ALL BULKHEAD MOUNTED CONNECTORS ARE PROPERLY BONDED TO AIRFRAME.
- ENSURE ALL SWITCHES, CIRCUIT BREAKERS, AND REMOTE MOUNTED BOXES ARE LABELED WITH A CONSISTENT SIZE, FONT, COLOR, BACKGROUND AND ARE ILLUMINATED CONSISTENT AS EXISTING LABELS.
- ROUTE ALL WIRES AND CABLES WITH EXISTING WIRE ROUTES WHERE POSSIBLE AND CLAMP IN ACCORDANCE WITH THE LATEST REVISION OF BHT-ELEC-SPM CHAPTER 6. WIRES MUST BE ROUTED WITH A MINIMUM OF 6 INCHES OF SEPARATION FROM OXYGEN AND FLUID LINES (MIN 2 INCHES IF WIRES IN CONDUIT).
- INSTALL SYSTEM IN ACCORDANCE WITH THE LATEST REVISION OF THE MANUFACTURERS INSTALLATION MANUAL.
- LOWERCASE LETTER CONNECTOR PIN DESIGNATORS ARE SHOWN AS UNDERLINED UPPERCASE LETTERS.
- INCLUDED IN KIT PN: 011-02325-02
- INCLUDED IN KIT PN: 011-02326-02
- THE CUMULATIVE COAX CABLE LENGTH BETWEEN LRU AND ANTENNA NOT TO EXCEED 50 FT WHEN USING P/N S44193 FOR GPS.
- THE CUMULATIVE COAX CABLE LENGTH BETWEEN LRU AND ANTENNA NOT TO EXCEED 35 FT WHEN USING P/N RG142B FOR GPS.
- POWER WIRES NOT TO EXCEED 20 FT FROM A 5A CIRCUIT BREAKER.

BILL OF MATERIALS

PREPARED	CP	 <p>COPYRIGHT ©2022 BY EAGLE COPTERS MAINTENANCE LTD        THIS DOCUMENT IS PRIVATE AND CONFIDENTIAL AND IS SUPPLIED ON THE EXPRESS CONDITION THAT IT IS NOT TO BE USED FOR ANY PURPOSE OR COPIED OR COMMUNICATED TO ANY OTHER PERSON WITHOUT WRITTEN PERMISSION FROM EAGLE COPTERS MAINTENANCE LTD.</p>
REVIEWED	NF	
RELEASED	JP	
SCALE:	NTS	
TITLE:	<b>WIRING DIAGRAM          GARMIN 750 XI &amp; 650 XI          B212</b>	
DWG:	<b>E2006-11-3</b>	
REV:	E	SHEET:
		1 OF 10

THIS DRAWING IS UNCONTROLLED UNLESS OPENED DIRECTLY FROM ECML'S CONTROLLED REPOSITORY

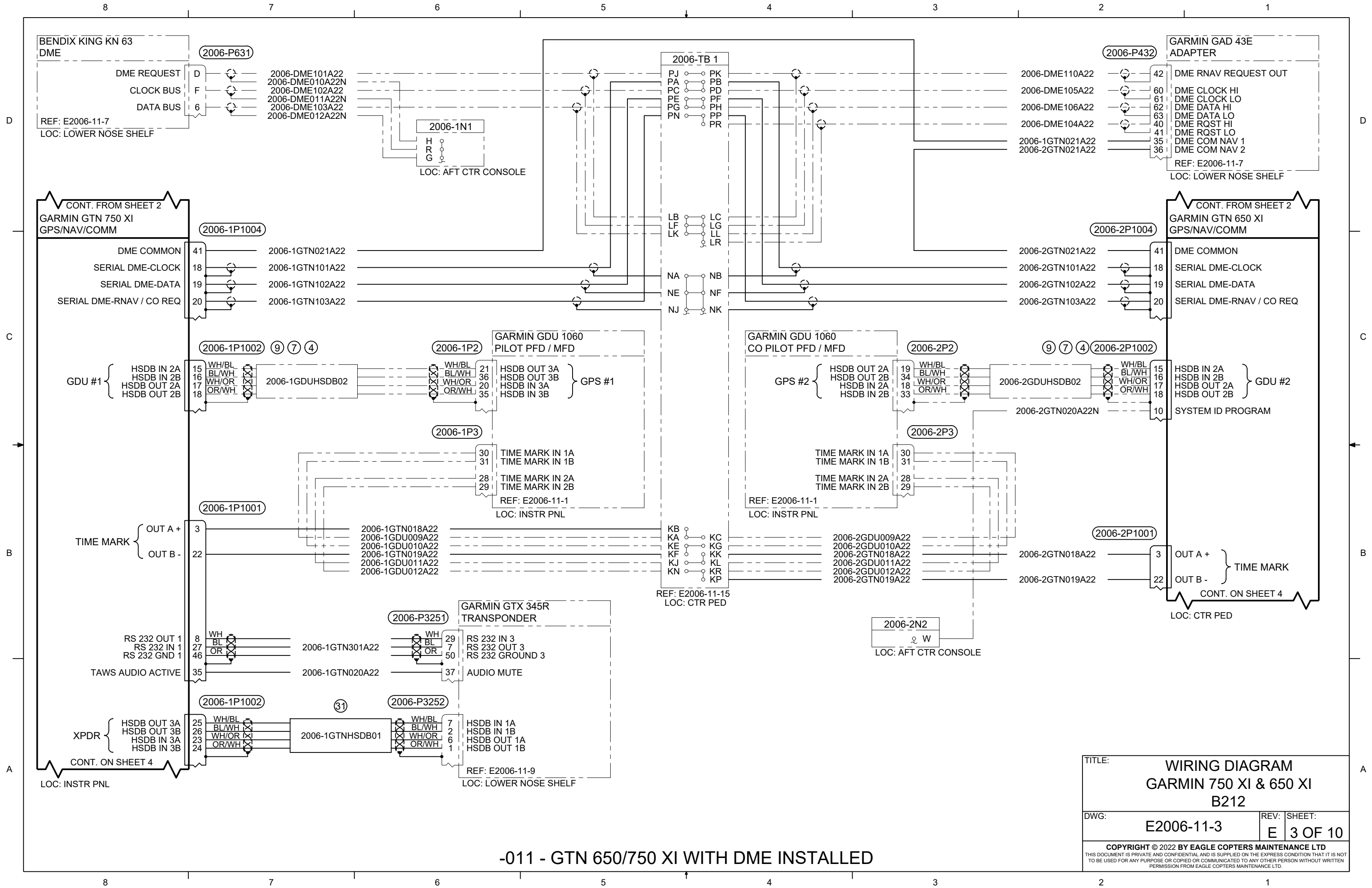


**-011 - GTN 650/750 XI WITH DME INSTALLED**

TITLE:		<b>WIRING DIAGRAM GARMIN 750 XI &amp; 650 XI B212</b>	
DWG:	<b>E2006-11-3</b>	REV:	<b>E</b>
		SHEET:	<b>2 OF 10</b>
<small>COPYRIGHT © 2022 BY EAGLE COPTERS MAINTENANCE LTD THIS DOCUMENT IS PRIVATE AND CONFIDENTIAL AND IS SUPPLIED ON THE EXPRESS CONDITION THAT IT IS NOT TO BE USED FOR ANY PURPOSE OR COPIED OR COMMUNICATED TO ANY OTHER PERSON WITHOUT WRITTEN PERMISSION FROM EAGLE COPTERS MAINTENANCE LTD.</small>			

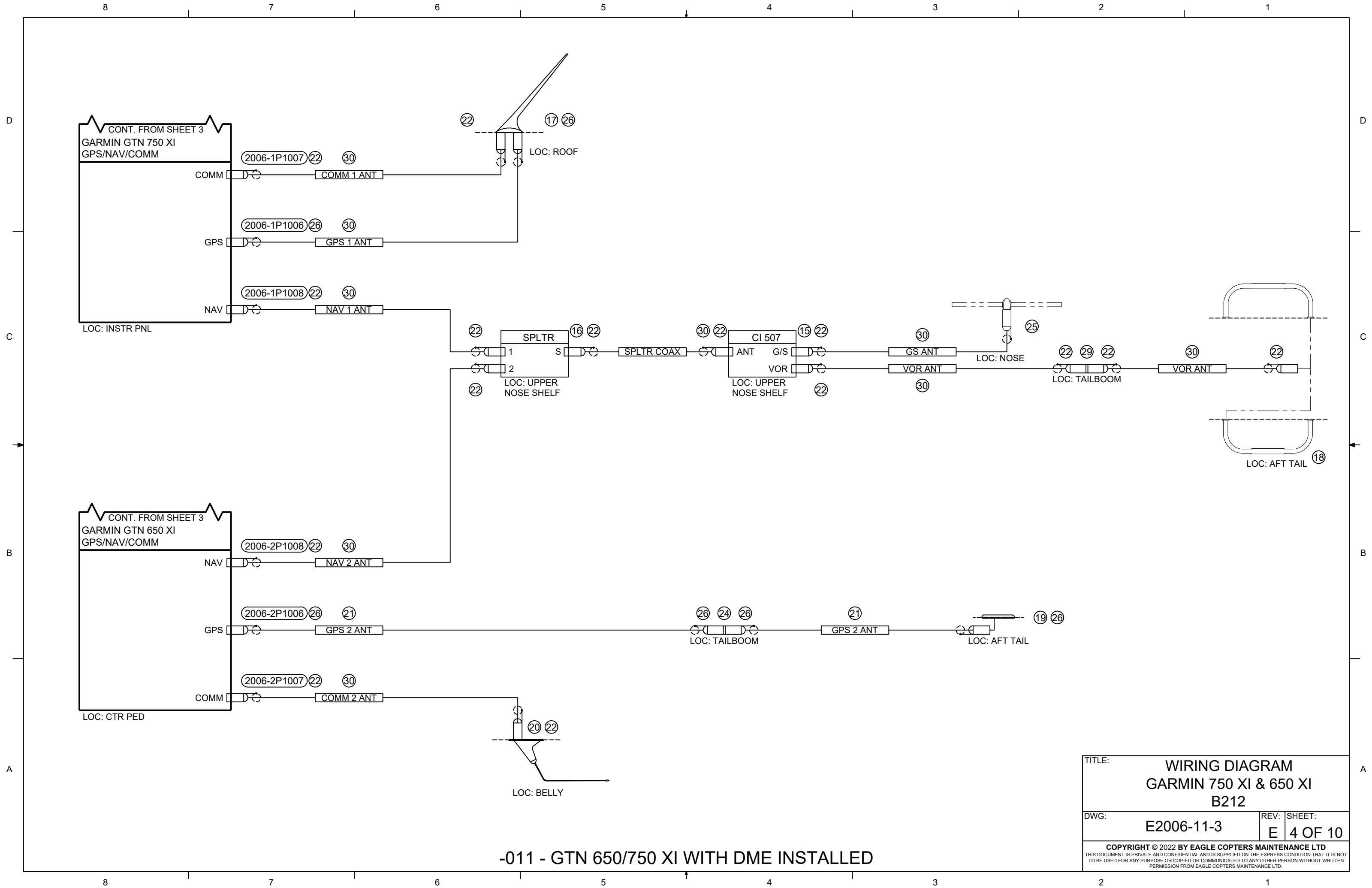
CONT. ON SHEET 3  
LOC: INSTR PNL

CONT. ON SHEET 3  
LOC: CTR PED



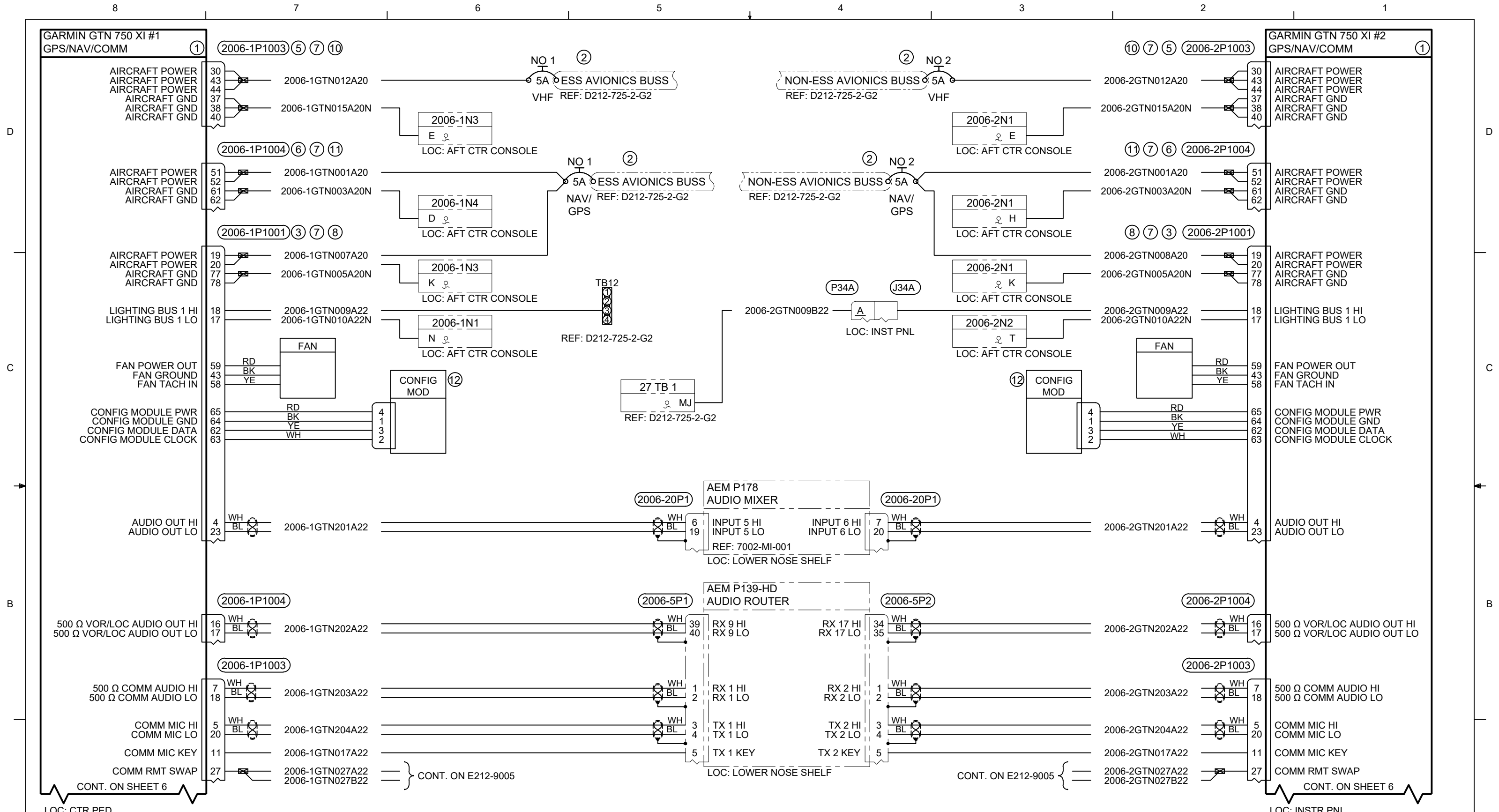
**-011 - GTN 650/750 XI WITH DME INSTALLED**

TITLE:		<b>WIRING DIAGRAM GARMIN 750 XI &amp; 650 XI B212</b>	
DWG:	<b>E2006-11-3</b>	REV:	<b>E</b>
		SHEET:	<b>3 OF 10</b>
<small>COPYRIGHT © 2022 BY EAGLE COPTERS MAINTENANCE LTD THIS DOCUMENT IS PRIVATE AND CONFIDENTIAL AND IS SUPPLIED ON THE EXPRESS CONDITION THAT IT IS NOT TO BE USED FOR ANY PURPOSE OR COPIED OR COMMUNICATED TO ANY OTHER PERSON WITHOUT WRITTEN PERMISSION FROM EAGLE COPTERS MAINTENANCE LTD.</small>			



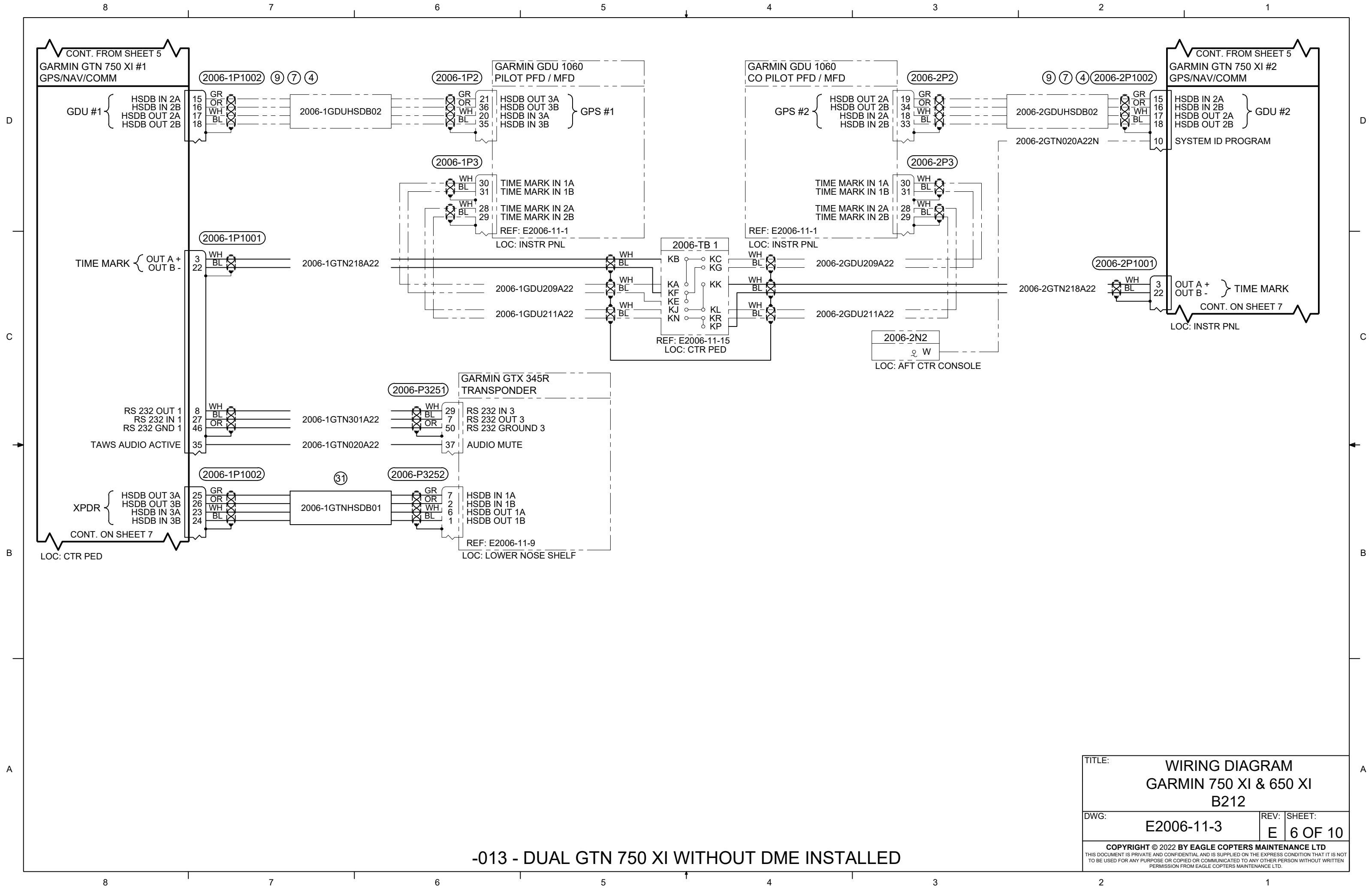
TITLE:			WIRING DIAGRAM		
			GARMIN 750 XI & 650 XI		
			B212		
DWG:	E2006-11-3	REV:	E	SHEET:	4 OF 10
<small>COPYRIGHT © 2022 BY EAGLE COPTERS MAINTENANCE LTD          THIS DOCUMENT IS PRIVATE AND CONFIDENTIAL AND IS SUPPLIED ON THE EXPRESS CONDITION THAT IT IS NOT          TO BE USED FOR ANY PURPOSE OR COPIED OR COMMUNICATED TO ANY OTHER PERSON WITHOUT WRITTEN          PERMISSION FROM EAGLE COPTERS MAINTENANCE LTD.</small>					

-011 - GTN 650/750 XI WITH DME INSTALLED



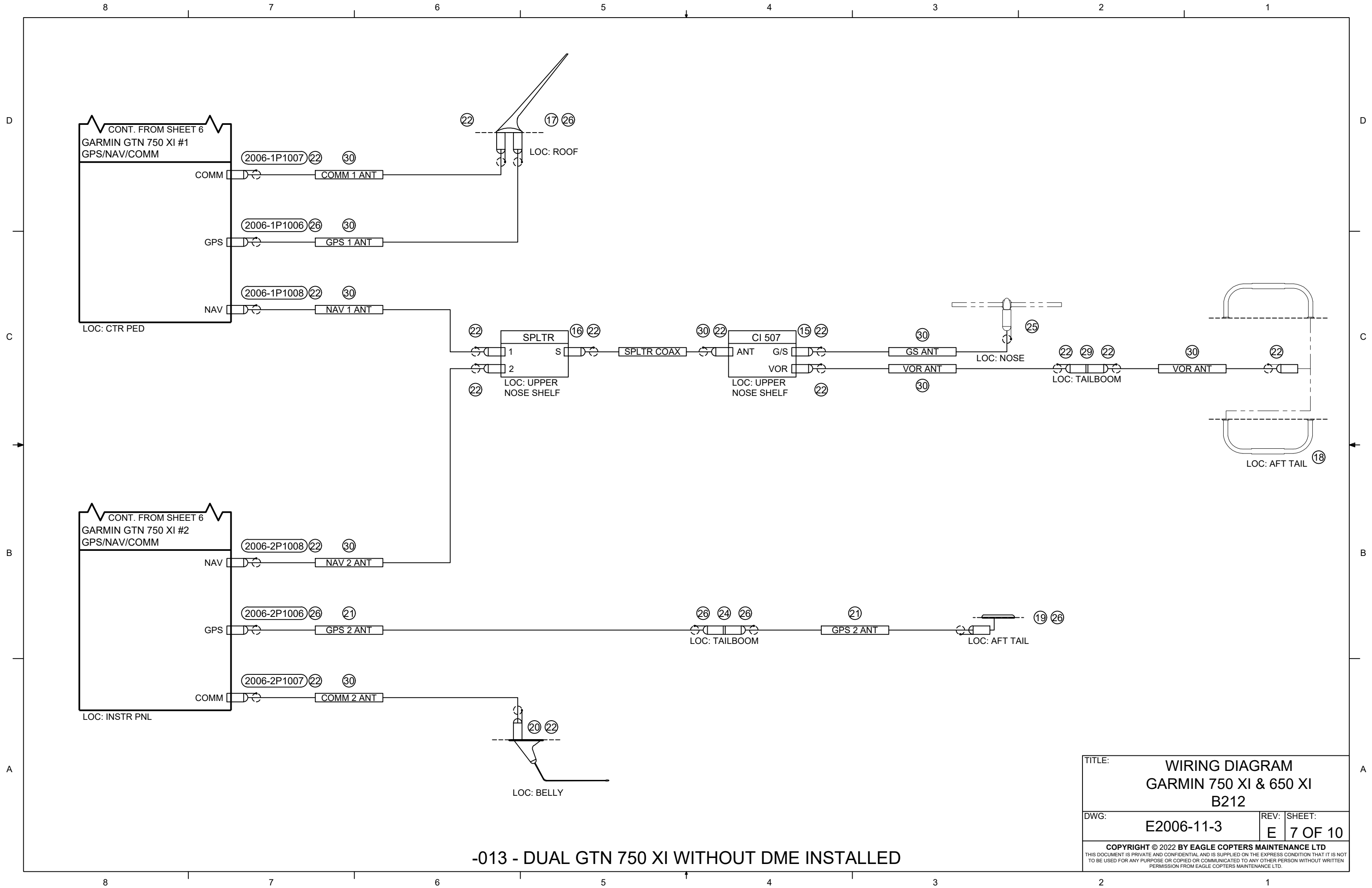
TITLE:		<b>WIRING DIAGRAM GARMIN 750 XI &amp; 650 XI B212</b>	
DWG:	<b>E2006-11-3</b>	REV:	<b>E</b>
SHEET:		<b>5 OF 10</b>	
<small>COPYRIGHT © 2022 BY EAGLE COPTERS MAINTENANCE LTD THIS DOCUMENT IS PRIVATE AND CONFIDENTIAL AND IS SUPPLIED ON THE EXPRESS CONDITION THAT IT IS NOT TO BE USED FOR ANY PURPOSE OR COPIED OR COMMUNICATED TO ANY OTHER PERSON WITHOUT WRITTEN PERMISSION FROM EAGLE COPTERS MAINTENANCE LTD.</small>			

**-013 - DUAL GTN 750 XI WITHOUT DME INSTALLED**



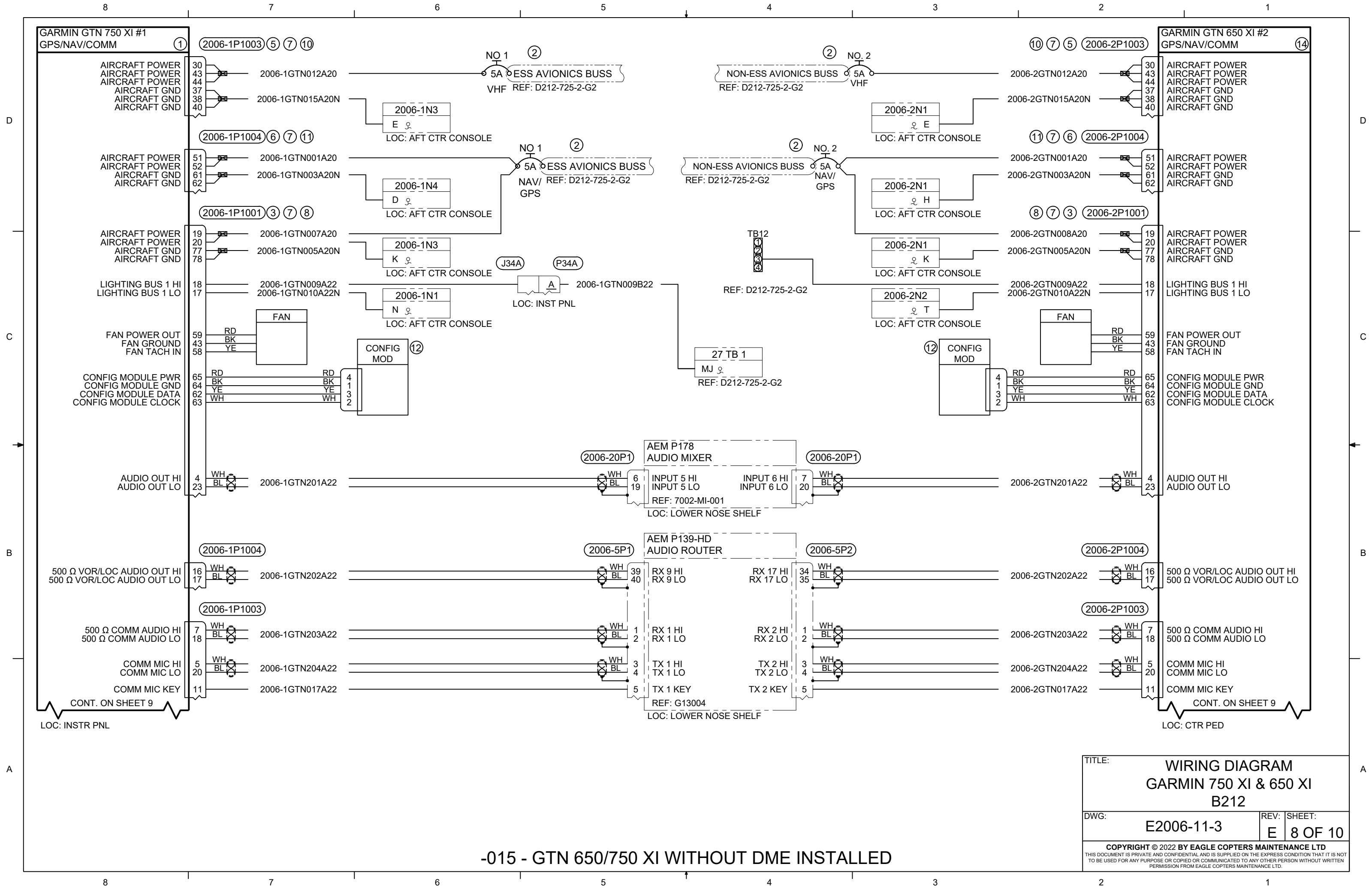
-013 - DUAL GTN 750 XI WITHOUT DME INSTALLED

TITLE:		WIRING DIAGRAM GARMIN 750 XI & 650 XI B212	
DWG:	E2006-11-3	REV:	E
SHEET:		6 OF 10	
<small>COPYRIGHT © 2022 BY EAGLE COPTERS MAINTENANCE LTD THIS DOCUMENT IS PRIVATE AND CONFIDENTIAL AND IS SUPPLIED ON THE EXPRESS CONDITION THAT IT IS NOT TO BE USED FOR ANY PURPOSE OR COPIED OR COMMUNICATED TO ANY OTHER PERSON WITHOUT WRITTEN PERMISSION FROM EAGLE COPTERS MAINTENANCE LTD.</small>			



-013 - DUAL GTN 750 XI WITHOUT DME INSTALLED

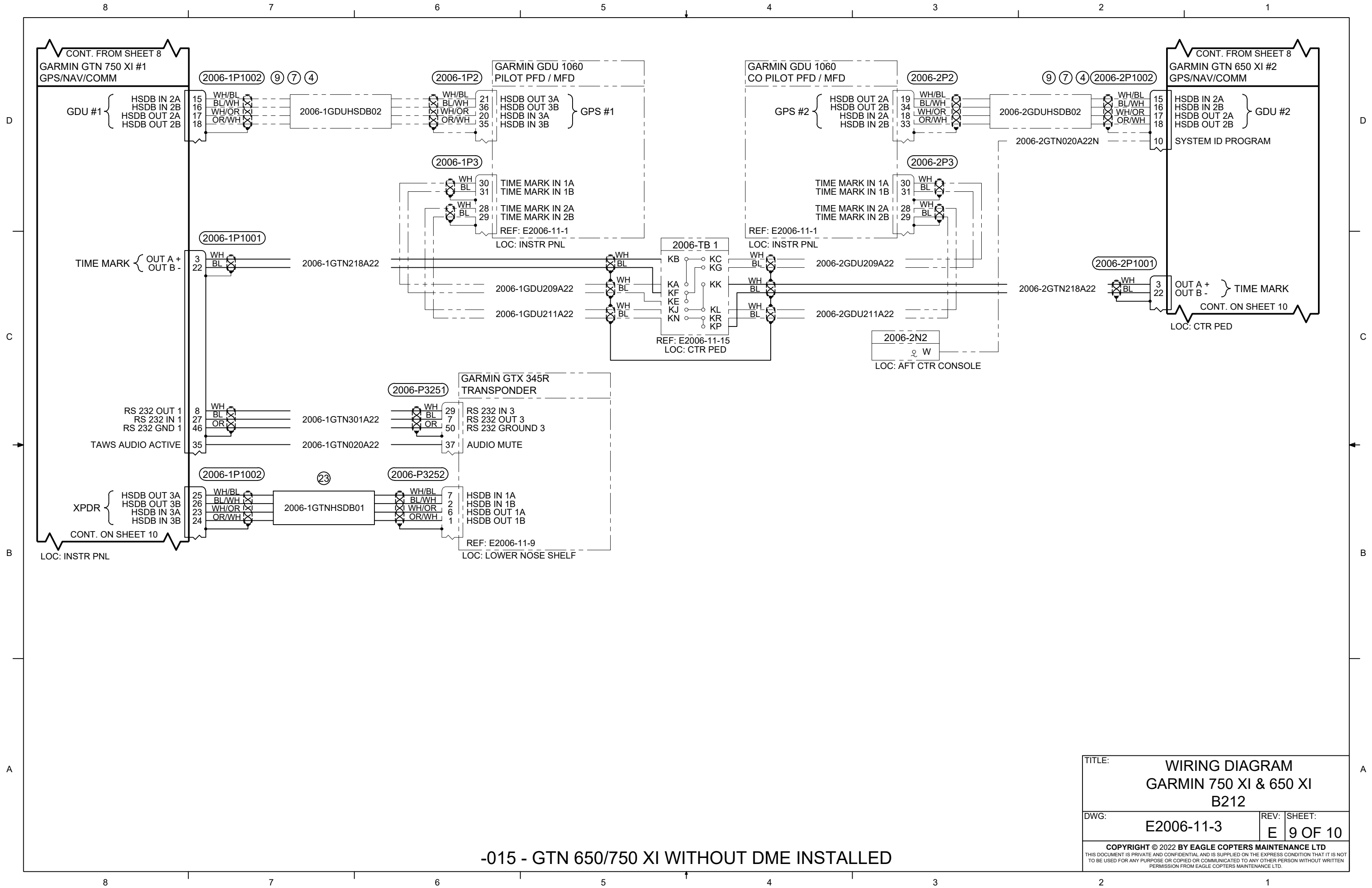
TITLE:		WIRING DIAGRAM GARMIN 750 XI & 650 XI B212	
DWG:	E2006-11-3	REV:	E
		SHEET:	7 OF 10
<small>COPYRIGHT © 2022 BY EAGLE COPTERS MAINTENANCE LTD THIS DOCUMENT IS PRIVATE AND CONFIDENTIAL AND IS SUPPLIED ON THE EXPRESS CONDITION THAT IT IS NOT TO BE USED FOR ANY PURPOSE OR COPIED OR COMMUNICATED TO ANY OTHER PERSON WITHOUT WRITTEN PERMISSION FROM EAGLE COPTERS MAINTENANCE LTD.</small>			



-015 - GTN 650/750 XI WITHOUT DME INSTALLED

TITLE:		WIRING DIAGRAM GARMIN 750 XI & 650 XI B212	
DWG:	E2006-11-3	REV:	E
		SHEET:	8 OF 10
<small>COPYRIGHT © 2022 BY EAGLE COPTERS MAINTENANCE LTD THIS DOCUMENT IS PRIVATE AND CONFIDENTIAL AND IS SUPPLIED ON THE EXPRESS CONDITION THAT IT IS NOT TO BE USED FOR ANY PURPOSE OR COPIED OR COMMUNICATED TO ANY OTHER PERSON WITHOUT WRITTEN PERMISSION FROM EAGLE COPTERS MAINTENANCE LTD.</small>			





CONT. FROM SHEET 8  
 GARMIN GTN 750 XI #1  
 GPS/NAV/COMM

CONT. FROM SHEET 8  
 GARMIN GTN 650 XI #2  
 GPS/NAV/COMM

GDU #1  
 HSDB IN 2A  
 HSDB IN 2B  
 HSDB OUT 2A  
 HSDB OUT 2B

GDU #2  
 HSDB IN 2A  
 HSDB IN 2B  
 HSDB OUT 2A  
 HSDB OUT 2B

TIME MARK  
 OUT A +  
 OUT B -

TIME MARK  
 OUT A +  
 OUT B -

XPDR  
 HSDB OUT 3A  
 HSDB OUT 3B  
 HSDB IN 3A  
 HSDB IN 3B

LOC: INSTR PNL

GARMIN GTX 345R  
 TRANSPONDER

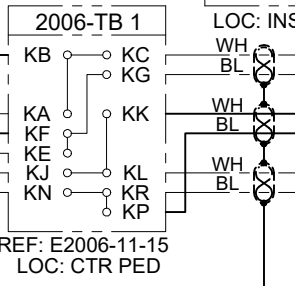
HSDB IN 1A  
 HSDB IN 1B  
 HSDB OUT 1A  
 HSDB OUT 1B

REF: E2006-11-9  
 LOC: LOWER NOSE SHELF

GARMIN GDU 1060  
 CO PILOT PFD / MFD

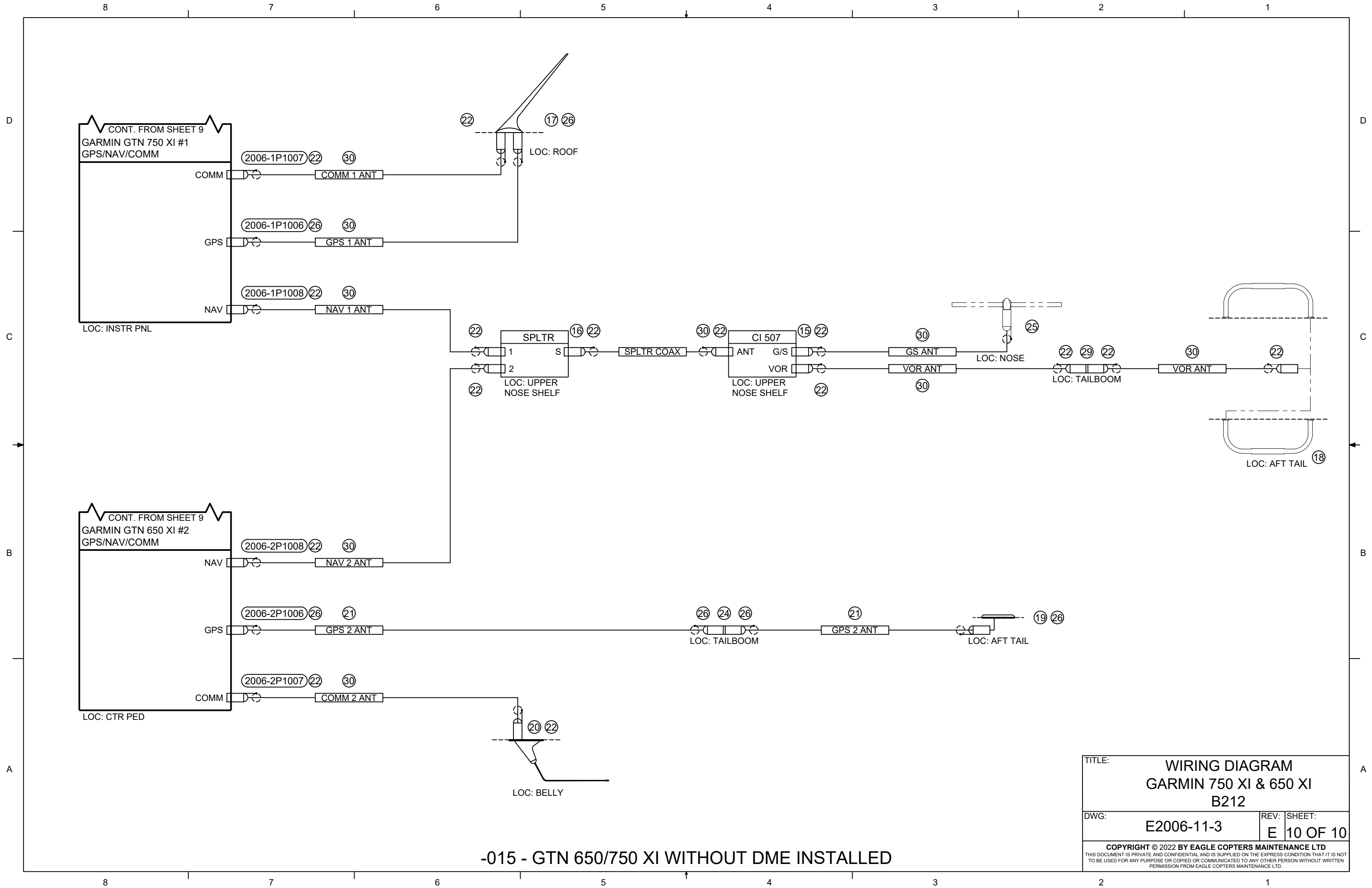
GPS #2  
 HSDB OUT 2A  
 HSDB OUT 2B  
 HSDB IN 2A  
 HSDB IN 2B

REF: E2006-11-1  
 LOC: INSTR PNL



2006-2N2  
 W  
 LOC: AFT CTR CONSOLE

TITLE: <b>WIRING DIAGRAM GARMIN 750 XI &amp; 650 XI B212</b>		
DWG: <b>E2006-11-3</b>	REV: <b>E</b>	SHEET: <b>9 OF 10</b>
<small>COPYRIGHT © 2022 BY EAGLE COPTERS MAINTENANCE LTD        THIS DOCUMENT IS PRIVATE AND CONFIDENTIAL AND IS SUPPLIED ON THE EXPRESS CONDITION THAT IT IS NOT        TO BE USED FOR ANY PURPOSE OR COPIED OR COMMUNICATED TO ANY OTHER PERSON WITHOUT WRITTEN        PERMISSION FROM EAGLE COPTERS MAINTENANCE LTD.</small>		



-015 - GTN 650/750 XI WITHOUT DME INSTALLED

TITLE:		WIRING DIAGRAM GARMIN 750 XI & 650 XI B212	
DWG:	E2006-11-3	REV:	SHEET: E 10 OF 10
<small>COPYRIGHT © 2022 BY EAGLE COPTERS MAINTENANCE LTD THIS DOCUMENT IS PRIVATE AND CONFIDENTIAL AND IS SUPPLIED ON THE EXPRESS CONDITION THAT IT IS NOT TO BE USED FOR ANY PURPOSE OR COPIED OR COMMUNICATED TO ANY OTHER PERSON WITHOUT WRITTEN PERMISSION FROM EAGLE COPTERS MAINTENANCE LTD.</small>			