

REV	DESCRIPTION	DATE
A	INITIAL RELEASE	09-09-2021
B	REVISED TO GSU 75H AND ITEM 13 P/N.	30-11-2021
C	CREATED -013 CONFIG WITHOUT DME AND WITH OAT PROBE DISCONNECT. UPDATED BOM.	16-12-2022
D	INCORPORATED ECN-212-005 REV A. ADDED -015 CONFIGURATION.	12-02-2024
E	UPDATED PIN LABELS FOR GMU 44B, AND REPLACED ETHERNET CABLE WITH P/N: E40424 FOR -013 CONFIGURATION. ADDED GDU 1060 ALTERNATE PN. CONNECTED LIGHTING BUS HI WIRE FOR PILOT AND CO-PILOT GDU 1060 TO 27TB1 FOR -015 CONFIGURATION.	19-08-2024

NEW WIRE / UNIT
 EXISTING WIRE / UNIT

NOTES:

- PERFORM ALL WORK IN ACCORDANCE WITH BELL HELICOPTER STANDARD PRACTICES MANUAL BHT-ELEC-SPM.
- ALL NEW UNSHIELDED WIRE USE M22759/41-(XX)-9 OR EQUIVALENT TYPE WIRE. (M22759/41-(XX)-9 IS NOT INTENDED TO BE USED IN SOLDER APPLICATIONS, SOLDERABILITY CAN BE ACHIEVED WITH THE PROPER SOLDER. USE CRIMP SPLICES FOR REPAIR). ALL WIRES 22 AWG UNLESS OTHERWISE SPECIFIED BY WIRE CODE. ALL JUMPERS TO BE LESS THAN 6 INCHES.
- ALL NEW SHIELDED WIRE USE M27500-(XX)SM(X)N23 OR EQUIVALENT TYPE WIRE. (M27500-(XX)SM(X)N23 IS NOT INTENDED TO BE USED IN SOLDER APPLICATIONS, SOLDERABILITY CAN BE ACHIEVED WITH THE PROPER SOLDER. USE CRIMP SPLICES FOR REPAIR). SOLDER SLEEVES SHALL USE SN96 SOLDER, USE P/N S200-X-00 OR EQUIVALENT.
- ALL SHIELD TERMINATIONS SHALL BE INSTALLED PER MIL-S-83519 OR EQUIVALENT. SHIELD TERMINATIONS SHOWN AS "DAISY-CHAINED" ARE FOR DRAWING CLARITY ONLY. INDIVIDUAL SHIELD EXTENSIONS SHALL BE SPLICED AT A COMMON TIE POINT TO THE TERMINATING WIRES. THE BACK SHELL OR AIRFRAME GROUND MAY BE USED.
- ALL AIRFRAME GROUNDS SHALL BE VIA AMP LUG OR GROUNDING BLOCK AND PROVIDE SEPARATE GROUND STUD LOCATIONS FOR DC POWER GROUNDS, AC POWER GROUNDS, CHASSIS GROUNDS, SIGNAL GROUNDS AND SHIELD GROUNDS.
- ALL EQUIPMENT BONDING TO ADJACENT AIRFRAME STRUCTURE TO BE 0.003 OHM OR LESS. ALL ELECTRICAL GROUNDING AND BONDING TO BE INSTALLED IN ACCORDANCE WITH THE LATEST REVISION OF BHT-ELEC-SPM CHAPTER 8.
- ALL TERMINALS TO BE INSTALLED IN ACCORDANCE WITH THE LATEST REVISION OF BHT-ELEC-SPM CHAPTER 4 PARAGRAPH 4-9.
- ALL CONNECTORS TO BE INSTALLED IN ACCORDANCE WITH THE LATEST REVISION OF BHT-ELEC-SPM CHAPTER 5 AND / OR CIRCULAR CONNECTOR INSTALLATION INSTRUCTIONS (GARMIN DOCUMENT 190-00313-12). ENSURE ALL UNUSED CONNECTOR CONTACTS ARE FILLED WITH SPARE PINS/SOCKETS OR PLASTIC GROMMET SEALING PLUGS. ENSURE ALL BULKHEAD MOUNTED CONNECTORS ARE PROPERLY BONDED TO AIRFRAME.
- ENSURE ALL SWITCHES, CIRCUIT BREAKERS, AND REMOTE MOUNTED BOXES ARE LABELED WITH A CONSISTENT SIZE, FONT, COLOR, BACKGROUND AND ARE ILLUMINATED CONSISTENT AS EXISTING LABELS.
- ROUTE ALL WIRES AND CABLES WITH EXISTING WIRE ROUTES WHERE POSSIBLE AND CLAMP IN ACCORDANCE WITH THE LATEST REVISION OF BHT-ELEC-SPM CHAPTER 6. WIRES MUST BE ROUTED WITH A MINIMUM OF 7 INCHES OF SEPARATION FROM OXYGEN AND FLUID LINES (MIN 2 INCHES IF WIRES IN CONDUIT).
- INSTALL SYSTEM IN ACCORDANCE WITH THE LATEST REVISION OF THE MANUFACTURERS INSTALLATION MANUAL.
- LOWERCASE LETTER CONNECTOR PIN DESIGNATORS ARE SHOWN AS UNDERLINED UPPERCASE LETTERS.
- INCLUDED IN KIT PN: 011-03527-00.
- INCLUDED IN KIT PN: 011-04038-00.
- INCLUDED IN KIT PN: 011-03109-00.
- INCLUDED IN KIT PN: 011-00871-00.
- POWER WIRES NOT TO EXCEED 20 FT.
- POWER WIRES NOT TO EXCEED 30 FT.
- INCLUDED IN KIT PN 011-04201-00.

2	2	2	25	010-03716-20	DATABASE SD CARD	GARMIN	
2	2	2	24	011-00978-00	OAT PROBE, KIT	GARMIN	
16	--	--	2	23	M39029/63-368	CONTACT, PIN	GARMIN
16	--	--	2	22	330-90005-01	BACKSHELL	GARMIN
16	--	--	2	21	330-00360-00	CONNECTOR, PLUG	GARMIN
1	1	1	20	MS3474W12-10SW	CONNECTOR, JACK	MIL SPEC	
--	--	2	19	011-00870-10	GMU 44 MAGNETOMETER	GARMIN	
2	2	2	18	011-00979-20	CONFIGURATION MODULE	GARMIN	
15	2	2	2	17	011-01855-04	BACKSHELL	GARMIN
15	2	2	2	16	330-00776-78	CONNECTOR, PLUG	GARMIN
15	AR (154)	AR (154)	AR (154)	15	M39029/58-360	CONTACT, PIN	MIL SPEC
2	2	2	14	MS22073-3	CIRCUIT BREAKER, 3A	MIL SPEC	
2	2	2	13	011-03094-20	GSU 75H	GARMIN	
14	2	2	2	12	011-04038-00	CONFIGURATION MODULE	GARMIN
13	2	2	2	11	011-01855-04	BACKSHELL	GARMIN
13	2	2	2	10	011-01855-03	BACKSHELL	GARMIN
13	2	2	2	9	011-01855-02	BACKSHELL	GARMIN
13	2	2	2	8	011-01855-01	BACKSHELL	GARMIN
13	AR (250)	AR (250)	AR (250)	7	336-00021-00	CONTACT, PIN	GARMIN
13	2	2	2	6	330-00366-78	CONNECTOR, PLUG	GARMIN
13	2	2	2	5	330-00366-62	CONNECTOR, PLUG	GARMIN
13	2	2	2	4	330-00366-44	CONNECTOR, PLUG	GARMIN
13	2	2	2	3	330-00366-26	CONNECTOR, PLUG	GARMIN
2	2	2	2	2	MS22073-5	CIRCUIT BREAKER, 5A	MIL SPEC
2	2	2	1	011-03308-20 ALT: 011-03308-22	GDU 1060	GARMIN	
					-015	CONFIGURATION	
					-013	CONFIGURATION	
					-011	CONFIGURATION	
<u>-015</u> QTY	<u>-013</u> QTY	<u>-011</u> QTY	ITEM	PART NUMBER	DESCRIPTION	REMARKS	

BILL OF MATERIALS

PREPARED	NF	 <p>COPYRIGHT © 2022 BY EAGLE COPTERS MAINTENANCE LTD THIS DOCUMENT IS PRIVATE AND CONFIDENTIAL AND IS SUPPLIED ON THE EXPRESS CONDITION THAT IT IS NOT TO BE USED FOR ANY PURPOSE OR COPIED OR COMMUNICATED TO ANY OTHER PERSON WITHOUT WRITTEN PERMISSION FROM EAGLE COPTERS MAINTENANCE LTD.</p>
REVIEWED	CP	
RELEASED	JP	
SCALE:	NTS	
TITLE:	WIRING DIAGRAM GARMIN G500 TXI B212	
DWG:	E2006-11-1	
REV:	E	SHEET:
		1 OF 13

THIS DRAWING IS UNCONTROLLED UNLESS OPENED DIRECTLY FROM ECML'S CONTROLLED REPOSITORY

8

7

6

5

4

3

2

1

D

D

C

C

B

B

A

A

	--	AR	--	47	E40424	CABLE, ETHERNET	PIC
19	2	2	--	46	011-04205-00	CONNECTOR KIT	GARMIN
	2	2	--	45	011-04201-00	GMU 44B MAGNETOMETER	GARMIN
	8	8	--	44	60617-1	SOCKETS 24/18 BRASS/TIN	EDMO
	2	2	--	43	1-480424-0	MATE'N'LOCK 4 SOCKET CONNECTOR	EDMO
	8	8	--	42	60618-1	PINS 24/18 BRASS/TIN	EDMO
	2	2	--	41	1-480426-0	MATE'N'LOCK 4 PIN CONNECTOR	EDMO
	1	1	1	40	010-01476-47	HSVT ENABLEMENT SD CARD	GARMIN
	1	1	1	39	010-03716-4J	METRIC PFD ENABLEMENT SD CARD	GARMIN
	1	1	1	38	010-01477-4A	RAD ALT ENABLEMENT SD CARD	GARMIN
	1	1	1	37	010-03716-33	HELICOPTER ENABLEMENT SD CARD	GARMIN
	1	1	1	36	010-00769-60	INSTALLER ENABLEMENT SD CARD	GARMIN
	1	1	1	35	MS3476W12-10PW	CONNECTOR, PLUG	MIL SPEC
	AR (20)	AR (20)	AR (20)	34	M39029/5-115	CONTACT, SOCKET	MIL SPEC
	1	1	1	33	MS3474W12-10S	CONNECTOR, JACK	MIL SPEC
	AR (20)	AR (20)	AR (20)	32	M39029/4-110	CONTACT, PIN	MIL SPEC
	1	1	1	31	MS3476W12-10P	CONNECTOR, PLUG	MIL SPEC
	1	1	1	30	M39029/32-247	CONTACT, SOCKET	MIL SPEC
	1	1	1	29	M39029/31-228	CONTACT, PIN	MIL SPEC
	1	1	1	28	M39029/32-259	CONTACT, SOCKET	MIL SPEC
	1	1	1	27	M39029/31-240	CONTACT, PIN	MIL SPEC
	AR	--	AR	26	392404	CABLE, ETHERNET	CARLISLE
	-015 QTY	-013 QTY	-011 QTY	ITEM	PART NUMBER	DESCRIPTION	REMARKS
BILL OF MATERIALS							

TITLE:		WIRING DIAGRAM GARMIN G500 TXI B212	
DWG:	E2006-11-1	REV:	SHEET:
		E	2 OF 13

COPYRIGHT © 2022 BY EAGLE COPTERS MAINTENANCE LTD
THIS DOCUMENT IS PRIVATE AND CONFIDENTIAL AND IS SUPPLIED ON THE EXPRESS CONDITION THAT IT IS NOT TO BE USED FOR ANY PURPOSE OR COPIED OR COMMUNICATED TO ANY OTHER PERSON WITHOUT WRITTEN PERMISSION FROM EAGLE COPTERS MAINTENANCE LTD.

8

7

6

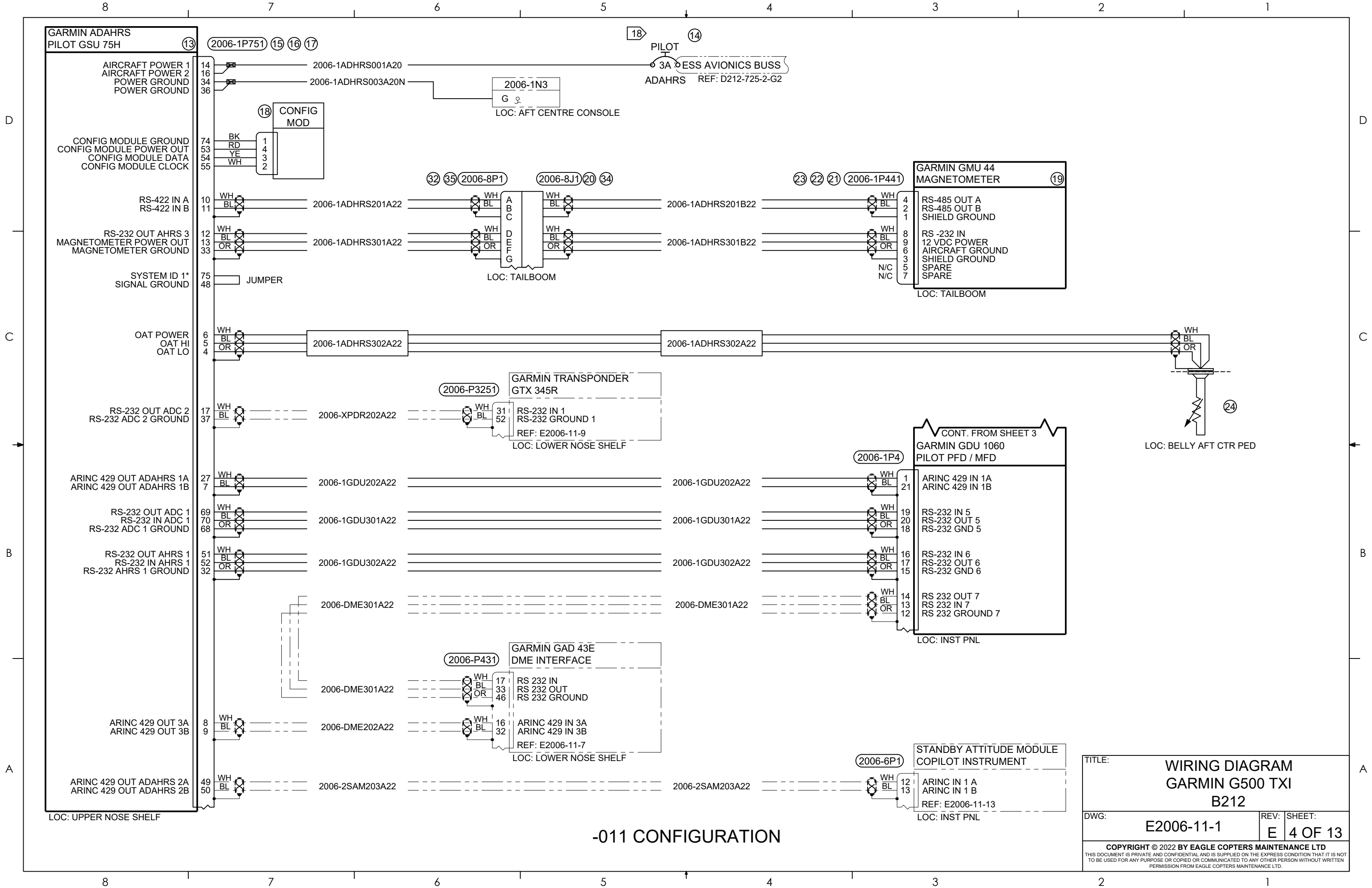
5

4

3

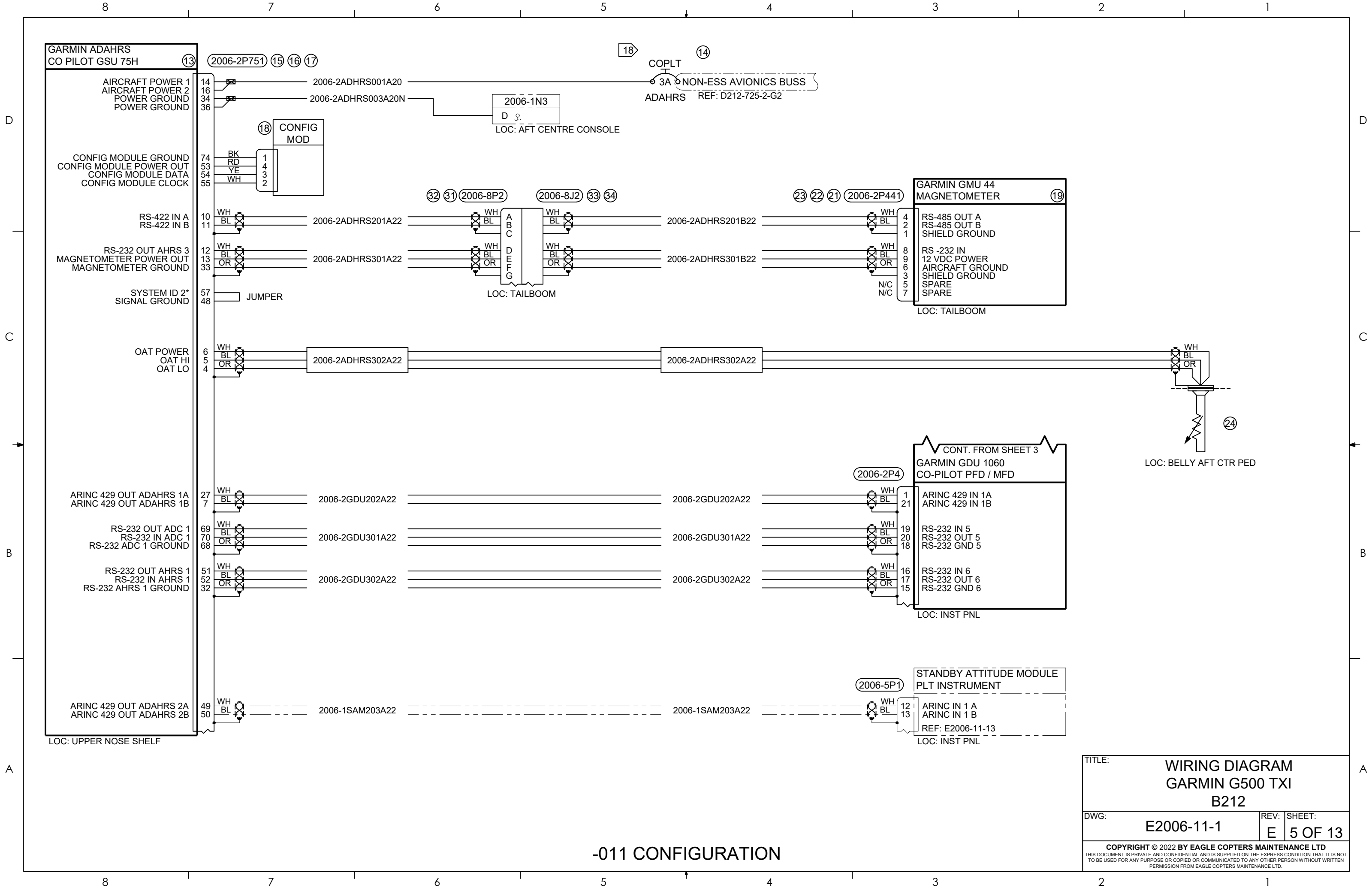
2

1



-011 CONFIGURATION

TITLE:		WIRING DIAGRAM GARMIN G500 TXI B212	
DWG:	E2006-11-1	REV:	E
		SHEET:	4 OF 13
<small>COPYRIGHT © 2022 BY EAGLE COPTERS MAINTENANCE LTD THIS DOCUMENT IS PRIVATE AND CONFIDENTIAL AND IS SUPPLIED ON THE EXPRESS CONDITION THAT IT IS NOT TO BE USED FOR ANY PURPOSE OR COPIED OR COMMUNICATED TO ANY OTHER PERSON WITHOUT WRITTEN PERMISSION FROM EAGLE COPTERS MAINTENANCE LTD.</small>			



GARMIN ADAHRS
CO PILOT GSU 75H (13)

AIRCRAFT POWER 1
AIRCRAFT POWER 2
POWER GROUND
POWER GROUND

CONFIG MODULE GROUND
CONFIG MODULE POWER OUT
CONFIG MODULE DATA
CONFIG MODULE CLOCK

RS-422 IN A
RS-422 IN B

RS-232 OUT AHRS 3
MAGNETOMETER POWER OUT
MAGNETOMETER GROUND

SYSTEM ID 2*
SIGNAL GROUND

OAT POWER
OAT HI
OAT LO

ARINC 429 OUT ADAHRS 1A
ARINC 429 OUT ADAHRS 1B

RS-232 OUT ADC 1
RS-232 IN ADC 1
RS-232 ADC 1 GROUND

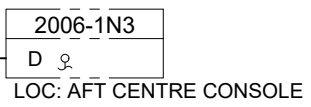
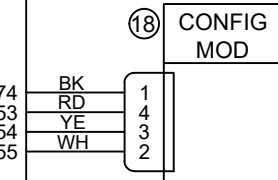
RS-232 OUT AHRS 1
RS-232 IN AHRS 1
RS-232 AHRS 1 GROUND

ARINC 429 OUT ADAHRS 2A
ARINC 429 OUT ADAHRS 2B

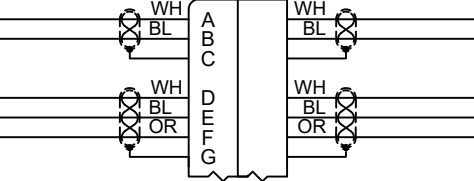
LOC: UPPER NOSE SHELF

2006-2P751 (15) (16) (17)

2006-2ADHRS001A20
2006-2ADHRS003A20N

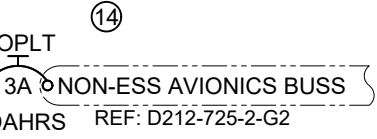


2006-8P2 (32) (31)



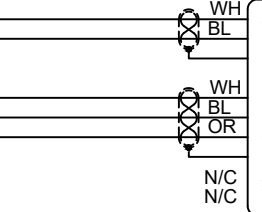
LOC: TAILBOOM

2006-2ADHRS302A22



REF: D212-725-2-G2

2006-2P441 (23) (22) (21)



GARMIN GMU 44
MAGNETOMETER (19)

RS-485 OUT A
RS-485 OUT B
SHIELD GROUND
RS-232 IN
12 VDC POWER
AIRCRAFT GROUND
SHIELD GROUND
SPARE
SPARE

LOC: TAILBOOM

2006-2ADHRS302A22

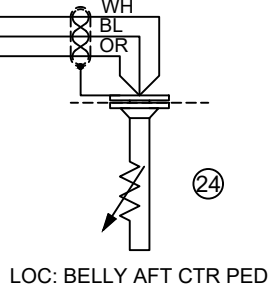
CONT. FROM SHEET 3
GARMIN GDU 1060
CO-PILOT PFD / MFD (20)

ARINC 429 IN 1A
ARINC 429 IN 1B
RS-232 IN 5
RS-232 OUT 5
RS-232 GND 5
RS-232 IN 6
RS-232 OUT 6
RS-232 GND 6

LOC: INST PNL

STANDBY ATTITUDE MODULE
PLT INSTRUMENT (21)

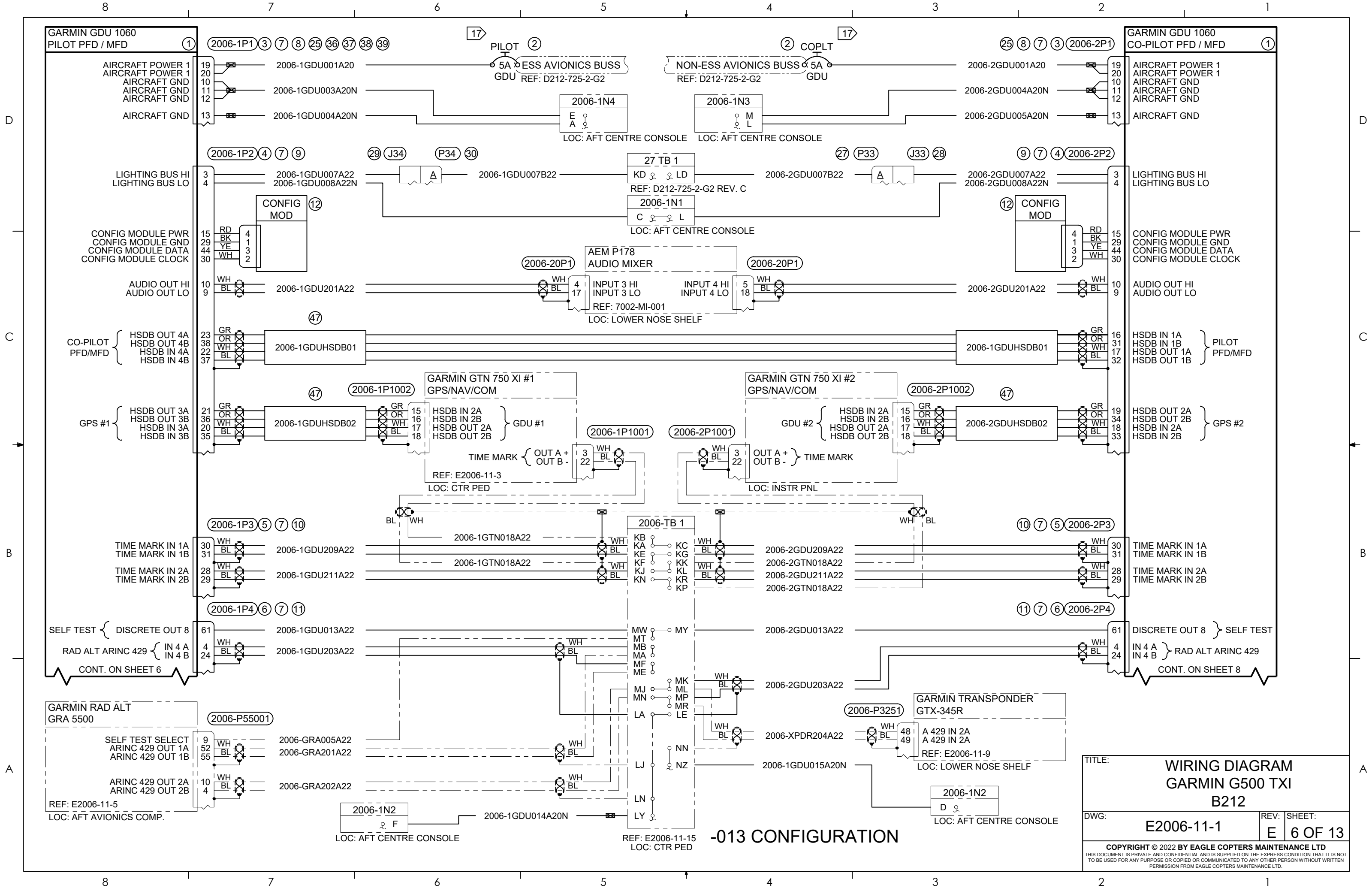
ARINC IN 1 A
ARINC IN 1 B
REF: E2006-11-13
LOC: INST PNL



LOC: BELLY AFT CTR PED

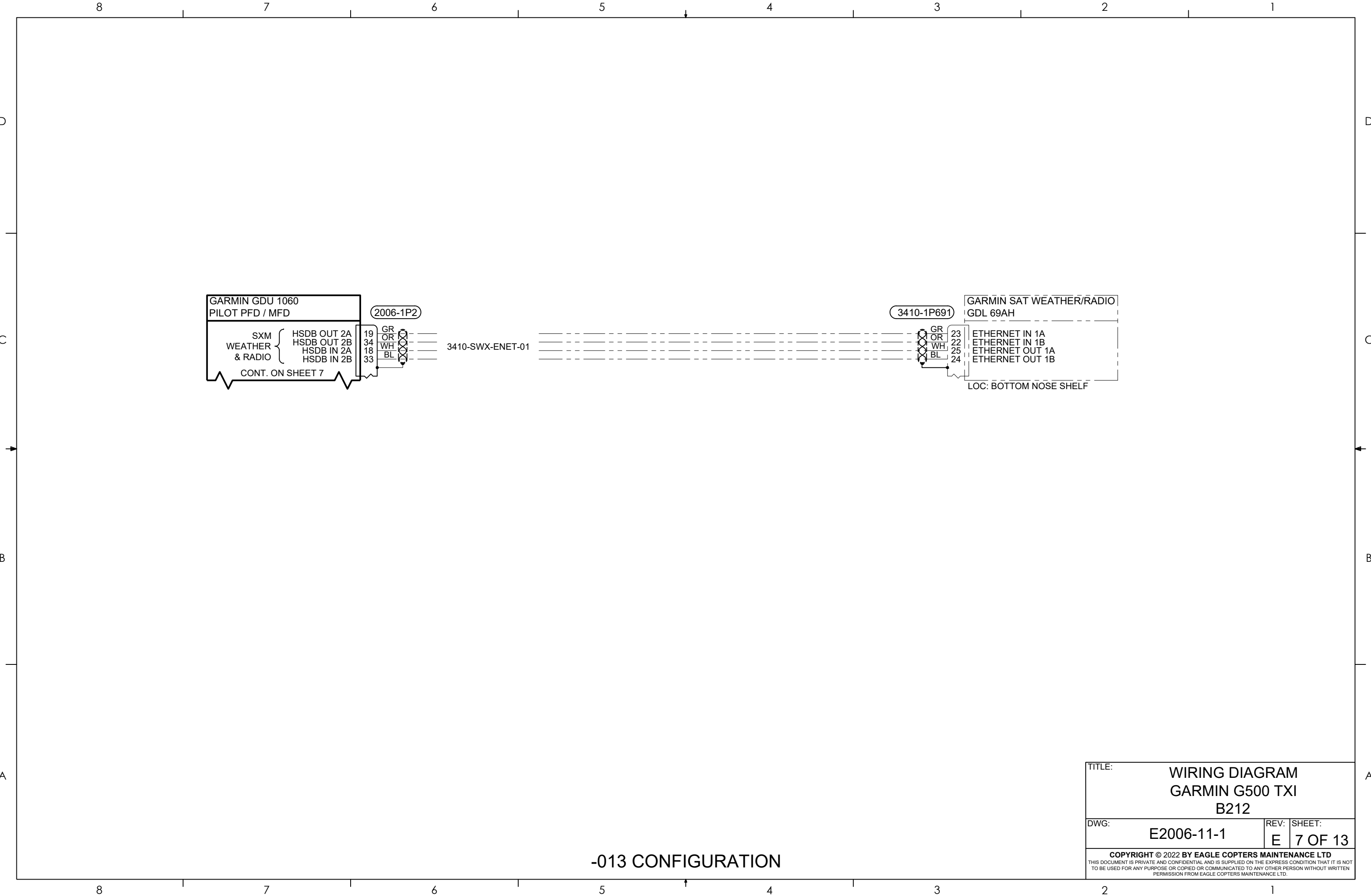
TITLE:		WIRING DIAGRAM GARMIN G500 TXI B212	
DWG:	E2006-11-1	REV:	SHEET: E 5 OF 13
<small>COPYRIGHT © 2022 BY EAGLE COPTERS MAINTENANCE LTD THIS DOCUMENT IS PRIVATE AND CONFIDENTIAL AND IS SUPPLIED ON THE EXPRESS CONDITION THAT IT IS NOT TO BE USED FOR ANY PURPOSE OR COPIED OR COMMUNICATED TO ANY OTHER PERSON WITHOUT WRITTEN PERMISSION FROM EAGLE COPTERS MAINTENANCE LTD.</small>			

-011 CONFIGURATION



-013 CONFIGURATION

TITLE:		WIRING DIAGRAM GARMIN G500 TXI B212	
DWG:	E2006-11-1	REV:	E
SHEET:		6 OF 13	
<small>COPYRIGHT © 2022 BY EAGLE COPTERS MAINTENANCE LTD THIS DOCUMENT IS PRIVATE AND CONFIDENTIAL AND IS SUPPLIED ON THE EXPRESS CONDITION THAT IT IS NOT TO BE USED FOR ANY PURPOSE OR COPIED OR COMMUNICATED TO ANY OTHER PERSON WITHOUT WRITTEN PERMISSION FROM EAGLE COPTERS MAINTENANCE LTD.</small>			



GARMIN GDU 1060
PILOT PFD / MFD

SXM WEATHER & RADIO {
 HSDB OUT 2A
 HSDB OUT 2B
 HSDB IN 2A
 HSDB IN 2B

CONT. ON SHEET 7

2006-1P2

3410-SWX-ENET-01

3410-1P691

GARMIN SAT WEATHER/RADIO
GDL 69AH

ETHERNET IN 1A
 ETHERNET IN 1B
 ETHERNET OUT 1A
 ETHERNET OUT 1B

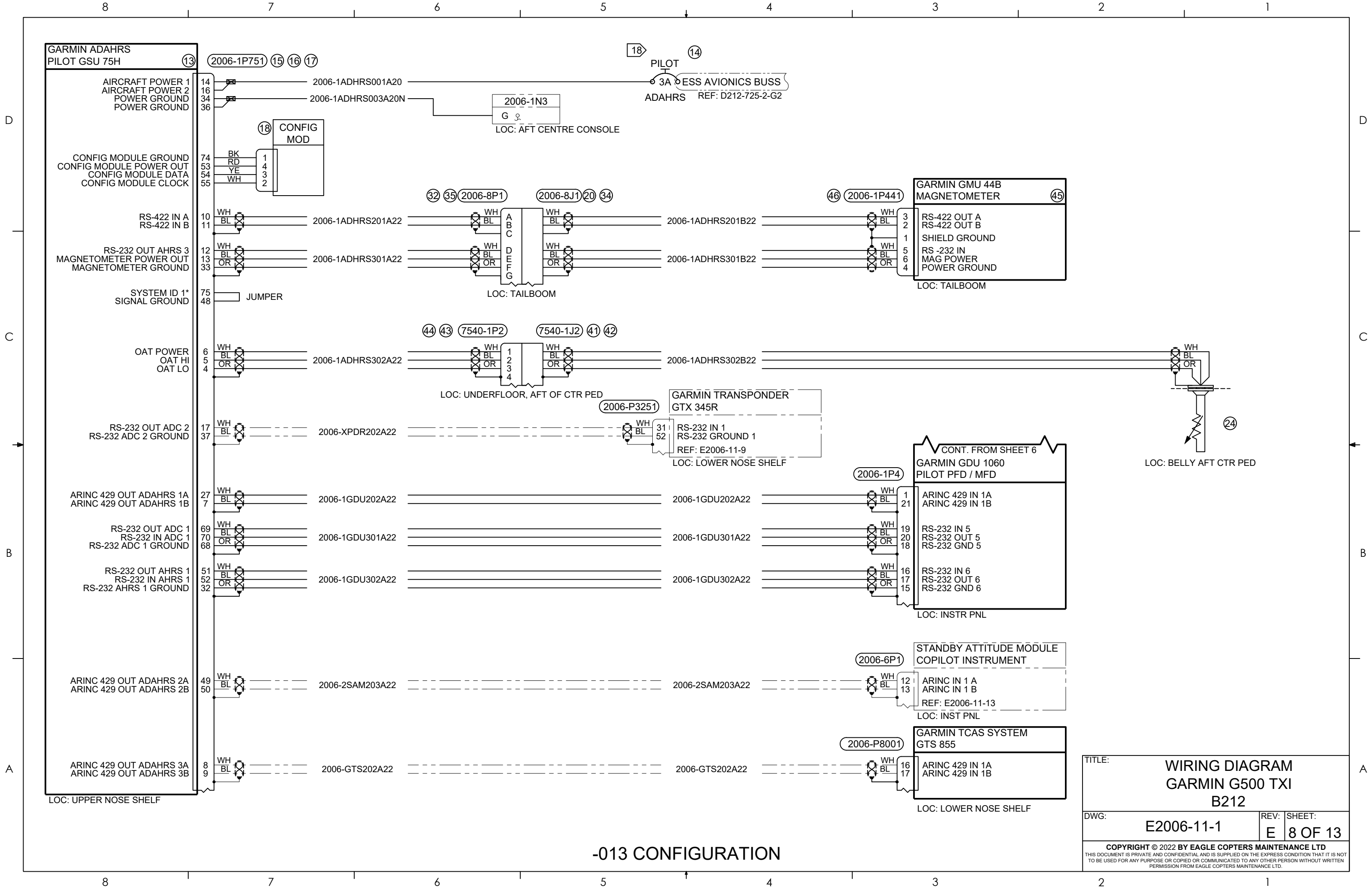
LOC: BOTTOM NOSE SHELF

TITLE: WIRING DIAGRAM
GARMIN G500 TXI
B212

DWG: E2006-11-1	REV: E	SHEET: 7 OF 13
-----------------	--------	----------------

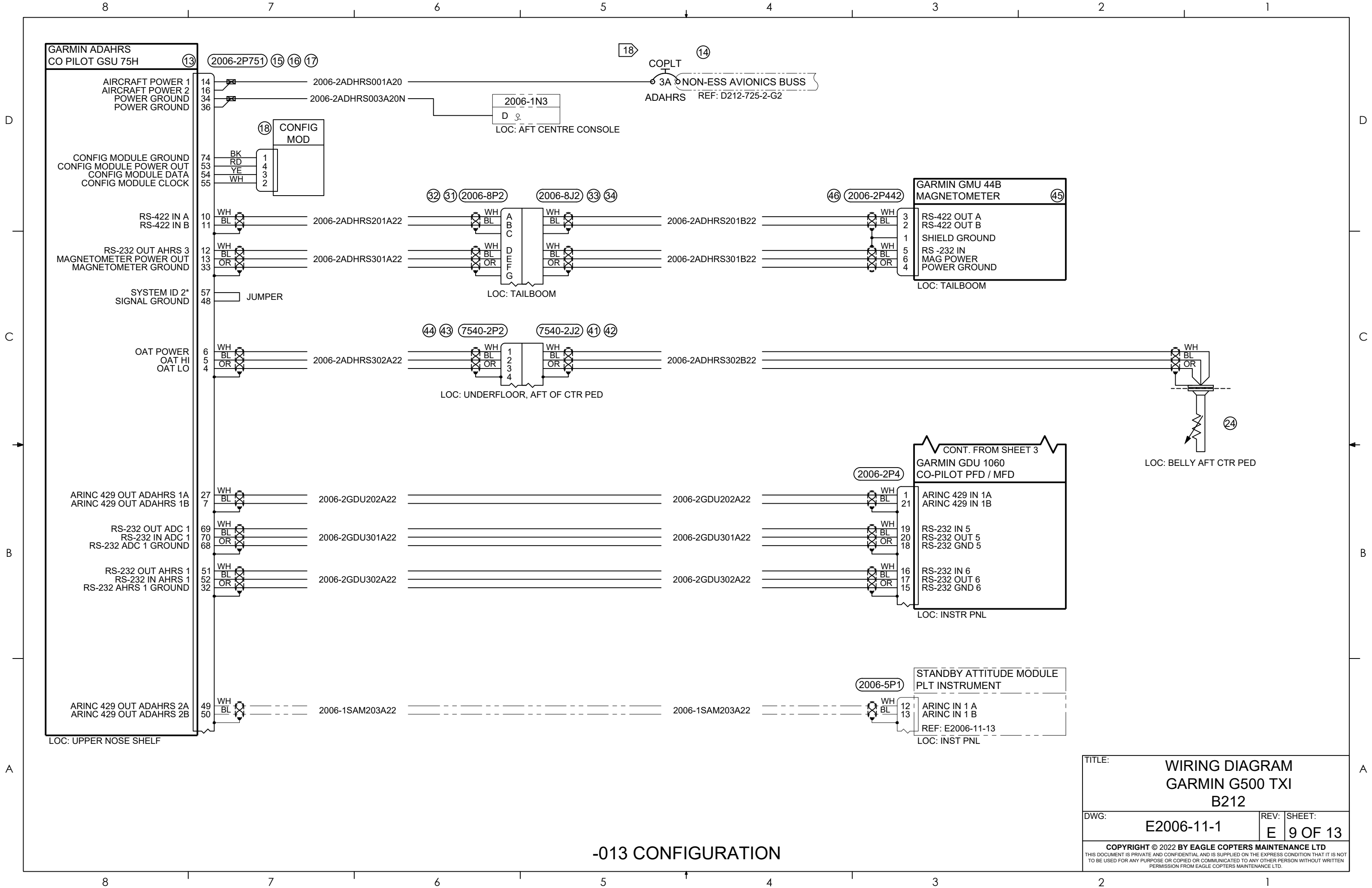
COPYRIGHT © 2022 BY EAGLE COPTERS MAINTENANCE LTD
THIS DOCUMENT IS PRIVATE AND CONFIDENTIAL AND IS SUPPLIED ON THE EXPRESS CONDITION THAT IT IS NOT TO BE USED FOR ANY PURPOSE OR COPIED OR COMMUNICATED TO ANY OTHER PERSON WITHOUT WRITTEN PERMISSION FROM EAGLE COPTERS MAINTENANCE LTD.

-013 CONFIGURATION



-013 CONFIGURATION

TITLE:		WIRING DIAGRAM GARMIN G500 TXI B212	
DWG:	E2006-11-1	REV:	E
SHEET:	8 OF 13		
<small>COPYRIGHT © 2022 BY EAGLE COPTERS MAINTENANCE LTD THIS DOCUMENT IS PRIVATE AND CONFIDENTIAL AND IS SUPPLIED ON THE EXPRESS CONDITION THAT IT IS NOT TO BE USED FOR ANY PURPOSE OR COPIED OR COMMUNICATED TO ANY OTHER PERSON WITHOUT WRITTEN PERMISSION FROM EAGLE COPTERS MAINTENANCE LTD.</small>			



GARMIN ADAHRS
CO PILOT GSU 75H (13)

AIRCRAFT POWER 1
AIRCRAFT POWER 2
POWER GROUND
POWER GROUND

CONFIG MODULE GROUND
CONFIG MODULE POWER OUT
CONFIG MODULE DATA
CONFIG MODULE CLOCK

RS-422 IN A
RS-422 IN B

RS-232 OUT AHRS 3
MAGNETOMETER POWER OUT
MAGNETOMETER GROUND

SYSTEM ID 2*
SIGNAL GROUND

OAT POWER
OAT HI
OAT LO

ARINC 429 OUT ADAHRS 1A
ARINC 429 OUT ADAHRS 1B

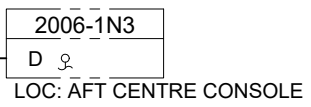
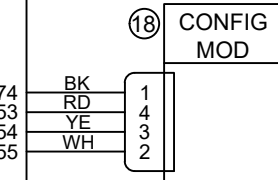
RS-232 OUT ADC 1
RS-232 IN ADC 1
RS-232 ADC 1 GROUND

RS-232 OUT AHRS 1
RS-232 IN AHRS 1
RS-232 AHRS 1 GROUND

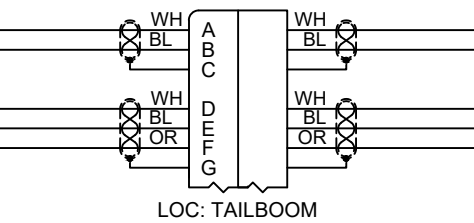
ARINC 429 OUT ADAHRS 2A
ARINC 429 OUT ADAHRS 2B

LOC: UPPER NOSE SHELF

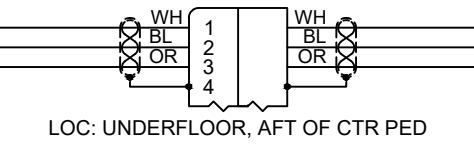
2006-2P751 (15) (16) (17)



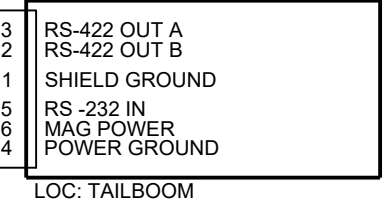
2006-8P2 (32) (31) (2006-8J2) (33) (34)



7540-2P2 (44) (43) (7540-2J2) (41) (42)

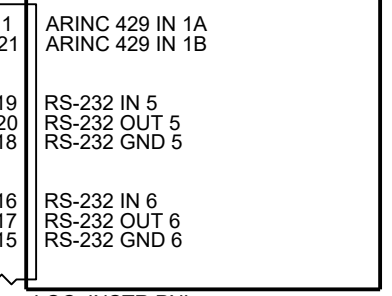


GARMIN GMU 44B
MAGNETOMETER (45)



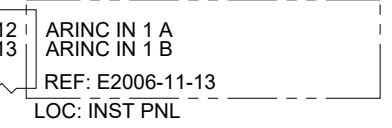
LOC: TAILBOOM

CONT. FROM SHEET 3
GARMIN GDU 1060
CO-PILOT PFD / MFD

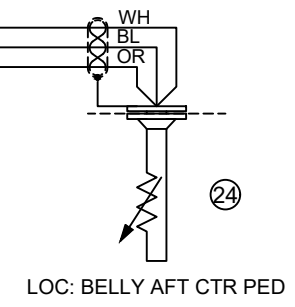


LOC: INSTR PNL

STANDBY ATTITUDE MODULE
PLT INSTRUMENT



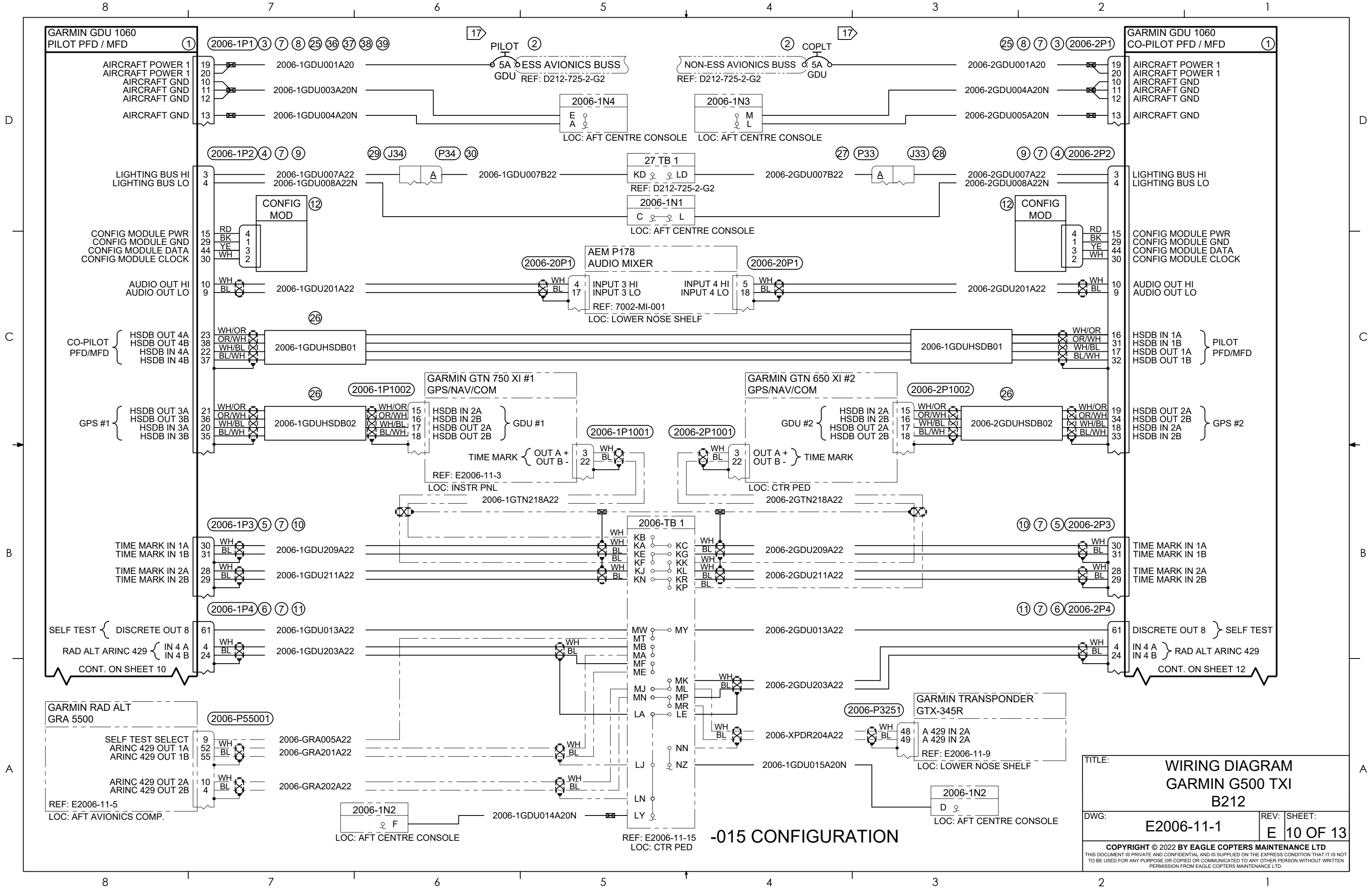
LOC: INST PNL



LOC: BELLY AFT CTR PED

TITLE:		WIRING DIAGRAM GARMIN G500 TXI B212	
DWG:	E2006-11-1	REV:	E
SHEET:		9 OF 13	
<small>COPYRIGHT © 2022 BY EAGLE COPTERS MAINTENANCE LTD THIS DOCUMENT IS PRIVATE AND CONFIDENTIAL AND IS SUPPLIED ON THE EXPRESS CONDITION THAT IT IS NOT TO BE USED FOR ANY PURPOSE OR COPIED OR COMMUNICATED TO ANY OTHER PERSON WITHOUT WRITTEN PERMISSION FROM EAGLE COPTERS MAINTENANCE LTD.</small>			

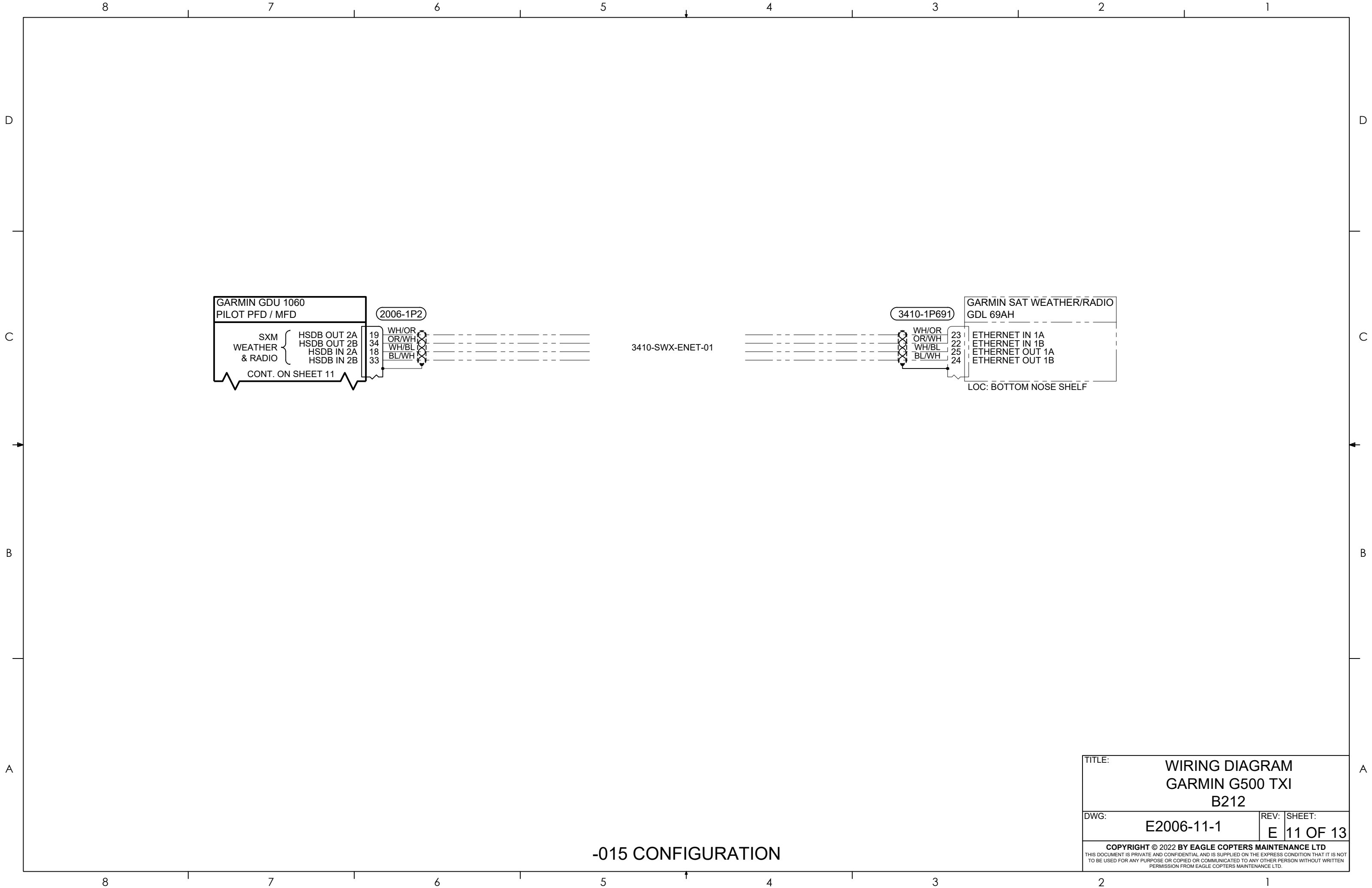
-013 CONFIGURATION



-015 CONFIGURATION

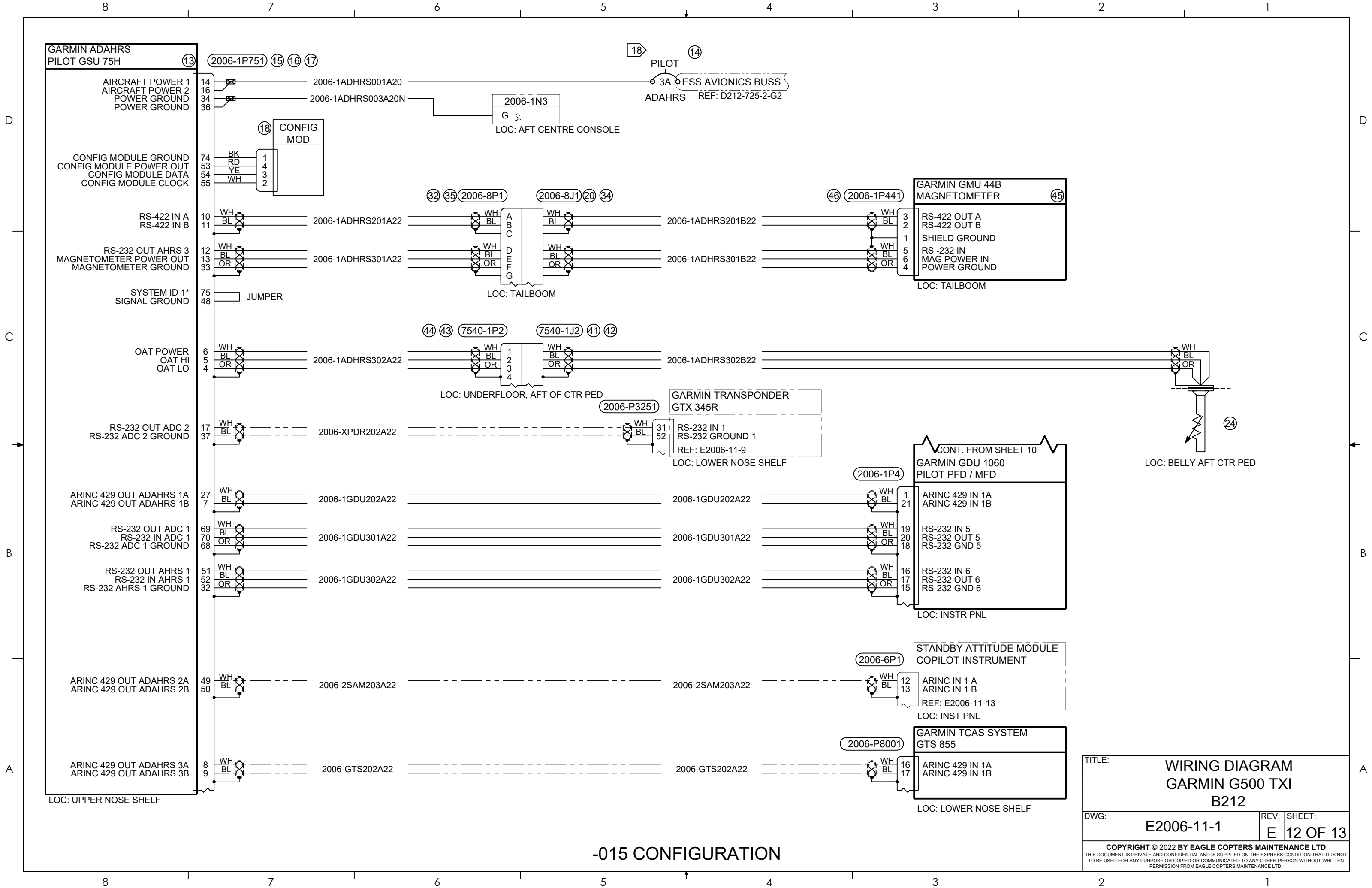
TITLE:		WIRING DIAGRAM GARMIN G500 TXI B212	
DWG:	E2006-11-1	REV:	SHEET:
		E	10 OF 13

COPYRIGHT © 2022 BY EAGLE COPTERS MAINTENANCE LTD
THIS DOCUMENT IS PRIVATE AND CONFIDENTIAL AND IS SUPPLIED ON THE EXPRESS CONDITION THAT IT IS NOT TO BE USED FOR ANY PURPOSE OR COPIED OR COMMUNICATED TO ANY OTHER PERSON WITHOUT WRITTEN PERMISSION FROM EAGLE COPTERS MAINTENANCE LTD.



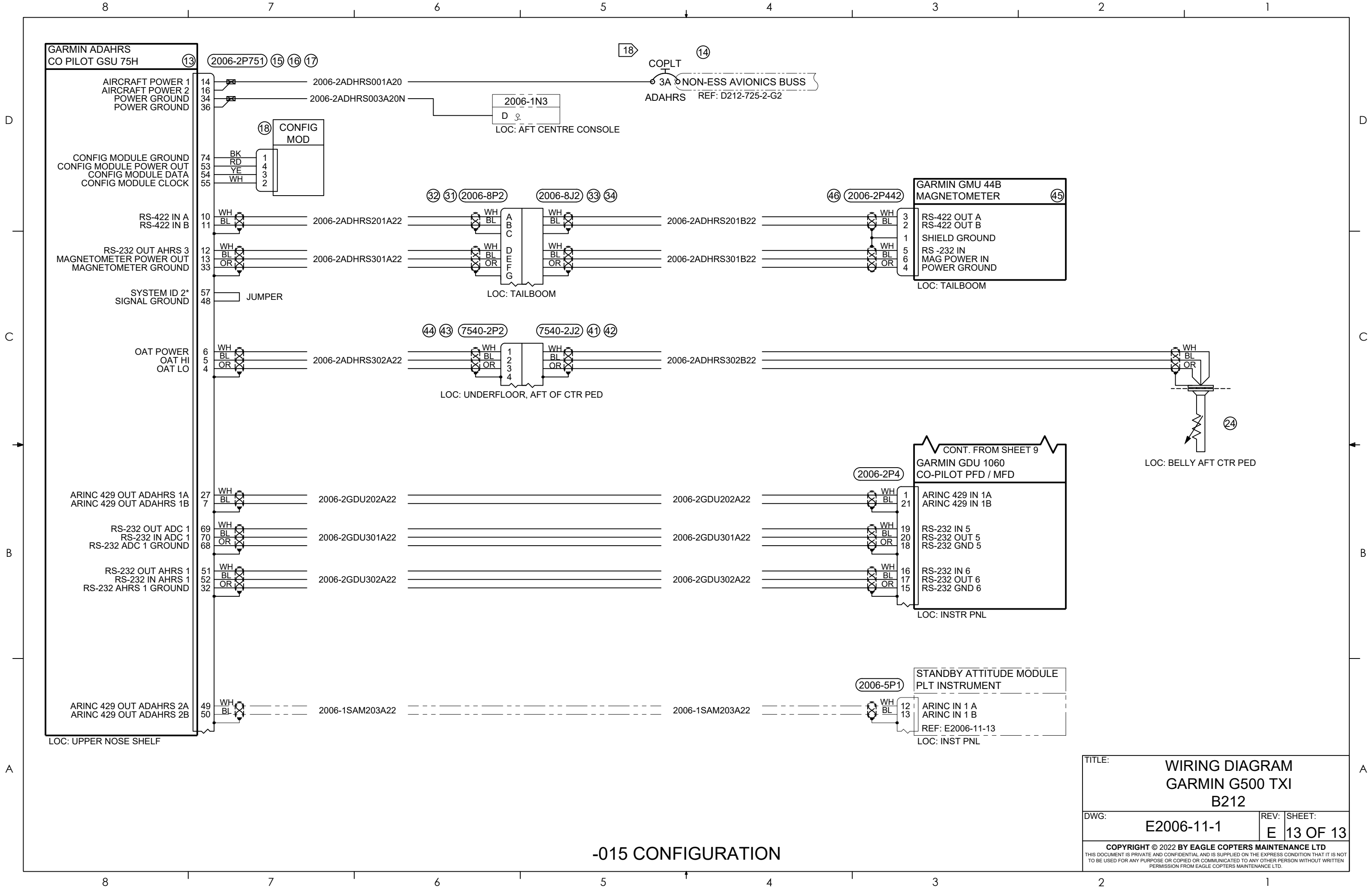
-015 CONFIGURATION

TITLE:			WIRING DIAGRAM GARMIN G500 TXI B212		
DWG:		E2006-11-1		REV:	E
		SHEET:		11 OF 13	
<small>COPYRIGHT © 2022 BY EAGLE COPTERS MAINTENANCE LTD THIS DOCUMENT IS PRIVATE AND CONFIDENTIAL AND IS SUPPLIED ON THE EXPRESS CONDITION THAT IT IS NOT TO BE USED FOR ANY PURPOSE OR COPIED OR COMMUNICATED TO ANY OTHER PERSON WITHOUT WRITTEN PERMISSION FROM EAGLE COPTERS MAINTENANCE LTD.</small>					



-015 CONFIGURATION

TITLE:		WIRING DIAGRAM GARMIN G500 TXI B212	
DWG:	E2006-11-1	REV:	E
SHEET:		12 OF 13	
<small>COPYRIGHT © 2022 BY EAGLE COPTERS MAINTENANCE LTD THIS DOCUMENT IS PRIVATE AND CONFIDENTIAL AND IS SUPPLIED ON THE EXPRESS CONDITION THAT IT IS NOT TO BE USED FOR ANY PURPOSE OR COPIED OR COMMUNICATED TO ANY OTHER PERSON WITHOUT WRITTEN PERMISSION FROM EAGLE COPTERS MAINTENANCE LTD.</small>			



**GARMIN ADAHRS
CO PILOT GSU 75H** (13)

AIRCRAFT POWER 1
AIRCRAFT POWER 2
POWER GROUND
POWER GROUND

CONFIG MODULE GROUND
CONFIG MODULE POWER OUT
CONFIG MODULE DATA
CONFIG MODULE CLOCK

RS-422 IN A
RS-422 IN B

RS-232 OUT AHRS 3
MAGNETOMETER POWER OUT
MAGNETOMETER GROUND

SYSTEM ID 2*
SIGNAL GROUND

OAT POWER
OAT HI
OAT LO

ARINC 429 OUT ADAHRS 1A
ARINC 429 OUT ADAHRS 1B

RS-232 OUT ADC 1
RS-232 IN ADC 1
RS-232 ADC 1 GROUND

RS-232 OUT AHRS 1
RS-232 IN AHRS 1
RS-232 AHRS 1 GROUND

ARINC 429 OUT ADAHRS 2A
ARINC 429 OUT ADAHRS 2B

LOC: UPPER NOSE SHELF

(2006-2P751) (15) (16) (17)

(18) **CONFIG
MOD**

74 BK 1
RD 4
YE 3
WH 2

2006-2ADHRS001A20

2006-2ADHRS003A20N

2006-1N3
D ♀
LOC: AFT CENTRE CONSOLE

COPLT (14)

NON-ESS AVIONICS BUSS
ADAHRS REF: D212-725-2-G2

(32) (31) **2006-8P2** (2006-8J2) (33) (34)

2006-2ADHRS201A22

2006-2ADHRS301A22

LOC: TAILBOOM

(44) (43) **7540-2P2** (7540-2J2) (41) (42)

2006-2ADHRS302A22

2006-2ADHRS302B22

LOC: UNDERFLOOR, AFT OF CTR PED

(46) **2006-2P442** (45)

**GARMIN GMU 44B
MAGNETOMETER**

RS-422 OUT A
RS-422 OUT B
SHIELD GROUND
RS-232 IN
MAG POWER IN
POWER GROUND

LOC: TAILBOOM

CONT. FROM SHEET 9

**GARMIN GDU 1060
CO-PILOT PFD / MFD**

(2006-2P4)

2006-2GDU202A22

2006-2GDU301A22

2006-2GDU302A22

LOC: INSTR PNL

(2006-5P1)

**STANDBY ATTITUDE MODULE
PLT INSTRUMENT**

2006-1SAM203A22

2006-1SAM203A22

LOC: INST PNL

TITLE:		WIRING DIAGRAM GARMIN G500 TXI B212	
DWG:	E2006-11-1	REV:	SHEET:
		E	13 OF 13
<small>COPYRIGHT © 2022 BY EAGLE COPTERS MAINTENANCE LTD THIS DOCUMENT IS PRIVATE AND CONFIDENTIAL AND IS SUPPLIED ON THE EXPRESS CONDITION THAT IT IS NOT TO BE USED FOR ANY PURPOSE OR COPIED OR COMMUNICATED TO ANY OTHER PERSON WITHOUT WRITTEN PERMISSION FROM EAGLE COPTERS MAINTENANCE LTD.</small>			

-015 CONFIGURATION